

DR-6/DT-6

COMPACT AND EXTENSIBLE RING MAIN UNIT



DR-6/DT-6

**Compact and/or extensible SF₆ insulated Ring Main Unit
with load break switch or integrated vacuum circuit breaker**

SAFETY, RELIABILITY, VERY COMPACT AND INSENSIBLE TO THE ENVIRONMENT IN THE FIELD OF ELECTRICITY DISTRIBUTION
FROM 6 TO 24 KV.

SGC

SwitchGear Company

THE SPECIALIST IN MEDIUM VOLTAGE SWITCHGEAR

www.switchgearcompany.eu - info@switchgearcompany.eu

TABLE OF CONTENTS

1. OVERVIEW	p. 3
1.1. DR-6/DT-6 DESIGN PHILOSOPHY AND APPLICATIONS	p. 3
1.2. APPLICATION	p. 4
1.3. SF ₆ INSULATION	p. 6
1.4. STANDARDS	p. 6
1.5. INTERNAL ARC RESISTANCE	p. 7
1.6. DR-6+/DT-6+ OPTION WITH BUILT-IN ARC-KILLER SV-50	p. 8
2. MAIN COMPONENTS	p. 9
2.1. LOAD BREAK SWITCH	p. 9
2.2. VACUUM CIRCUIT BREAKER ISM	p. 9
2.3. VACUUM CIRCUIT BREAKER VA-3	p. 9
2.4. THE FUSE HOLDERS	p. 9
2.5. THE MECHANICAL DRIVES	p. 10
2.6. CABLE CONNECTION	p. 10
2.7. EXTENSIBILITY CONCEPT	p. 10
2.8. CABLE TEST POINT	p. 11
2.9. SYNOPTIC DIAGRAM AND ACCESSORIES	p. 11
2.10. PROTECTION RELAY	p. 11
2.11. THE ENCLOSURE	p. 11
3. DR-6/DT-6 MODULES RANGE	p. 12
3.1. TECHNICAL SPECIFICATIONS	p. 12
3.2. DESCRIPTIONS	p. 13
3.3. MODULES - SPECIFICATIONS & DIMENSIONS	p. 14
• DR-6E K	p. 16
• DR-6E T	p. 17
• DR-6E D	p. 18
• DR-6 2K	p. 19
• DR-6 3K	p. 20
• DR-6 4K	p. 21
• DR-6 2KD	p. 22
• DR-6 KT	p. 23
• DR-6 K2T	p. 25
• DR-6 K3T	p. 27
• DR-6 2KT	p. 29
• DR-6 3KT	p. 31
• DR-6 2K2T	p. 33
• DT-6 2D	p. 35
• DT-6 3D	p. 37
• DT-6 4D	p. 39
• DT-6 KD	p. 41
• DT-6 K2D	p. 43
• DT-6 K3D	p. 45
• DT-6 2KD	p. 47
• DT-6 3KD	p. 49
• DT-6 2K2D	p. 51
4. PRODUCTION PROCESS	p. 53
5. OTHER PRODUCTS BY SGC - SWITCHGEAR COMPANY	p. 54

SGC - SwitchGear Company nv • Moorstraat 24, 9850 Landegem, Belgium
T. : +32 (0)9/321 91 12 • www.switchgearcompany.eu • info@switchgearcompany.eu

1. OVERVIEW

1.1. DR-6/DT-6 DESIGN PHILOSOPHY AND APPLICATIONS

SGC - SwitchGear Company nv is a fast-growing Belgian company that invests considerable time and energy in Research & Development to serve customers even better.

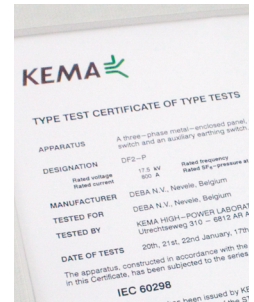


User-friendliness, safety and care for the environment were the main drive for developing SGC's switchgear.

Over time SGC has developed the 'DR-6/DT-6' concept which combines all medium voltage functions. It allows SGC to provide solutions for your medium voltage needs.

The DR-6/DT-6 RMU and associated switchgear offer a wide range of applications and can be used worldwide in many industries. DR-6/DT-6 RMU can be used as distribution switchgear with electrical substations, wind generators, cogeneration, and much more.

The DR-6/DT-6 concept provides a solution for all your needs and demands : it can replace obsolete installations and extend existing installations, and it is also perfectly suitable for entirely new constructions.



1.2. APPLICATION

Power stations generate electrical power, with voltages up to 380.000 V, which is transported to transformer stations and dispersion stations.

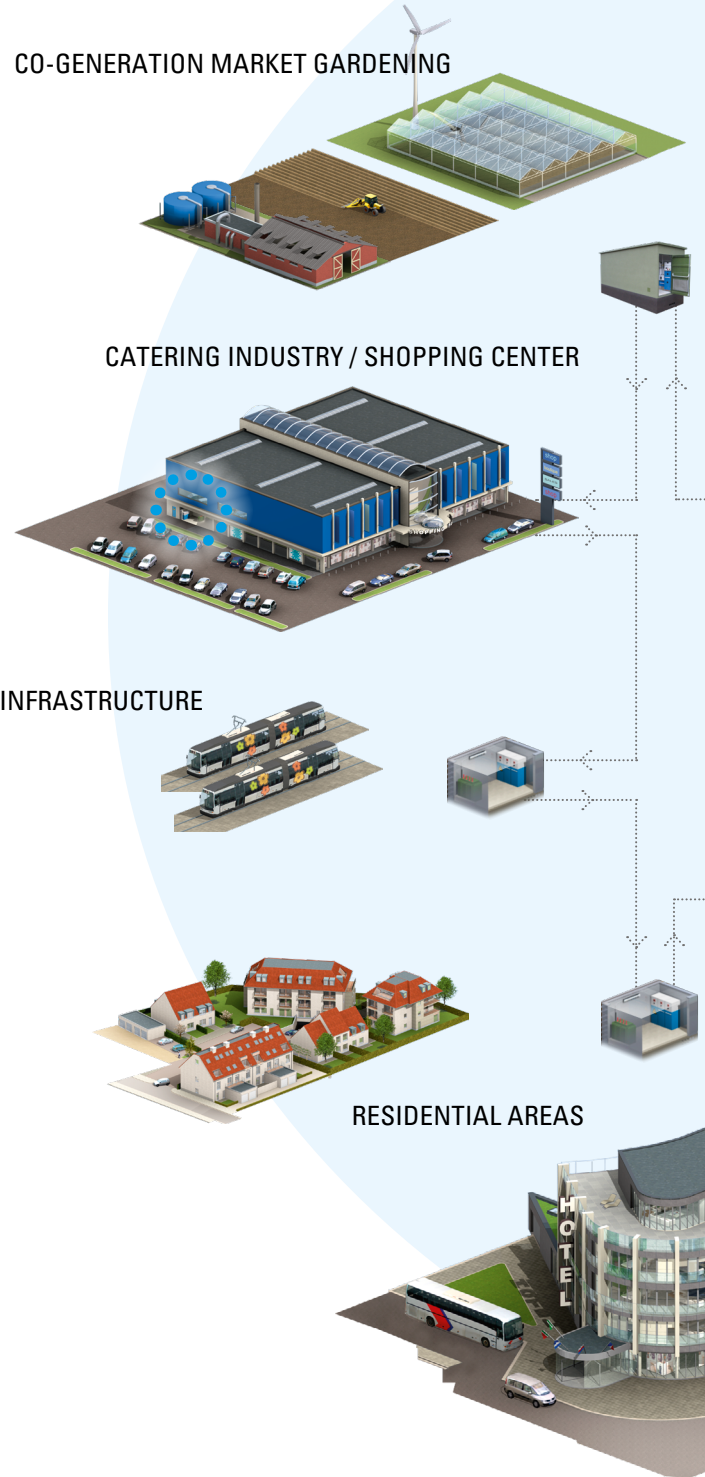
These substations distribute medium voltage (+/- 10.000 V to +/- 24.000 V). Here too, a number of SGC's RMU's are used. A medium voltage grid starts from every substation and supplies a large area with medium voltage.

Wherever medium voltage enters residential areas, industrial production companies, market gardening, hotels, sport venues, and more, there is a medium voltage switchgear fulfilling four essential functions.

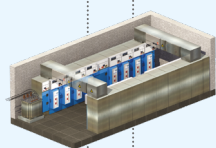
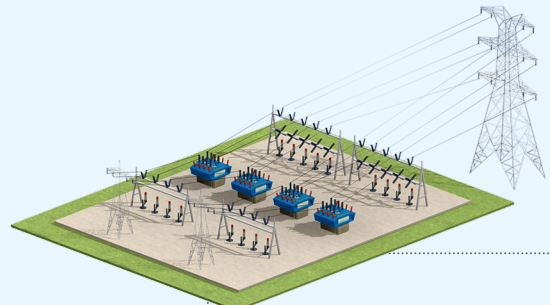
1. **POWER SUPPLY** : the utility providers's grid is branched off to allow switching.
2. **SECURITY** : the installation is secured with a load break switch with HRC fuses, or by a circuit breaker with a safety relay.
3. **MEASUREMENT** : the energy consumption is measured on the high voltage, or low voltage side.
4. **TRANSFORMATION** : medium voltage is transformed into low voltage (690 V - 400 V - 231 V).

'SGC provides made to measure solutions for all your medium voltage needs'

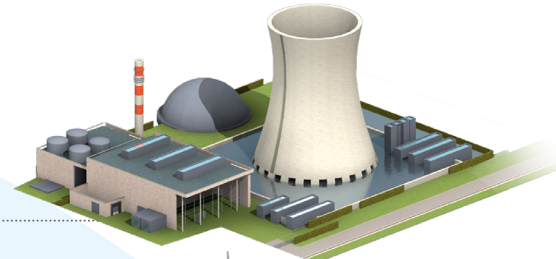
The Power



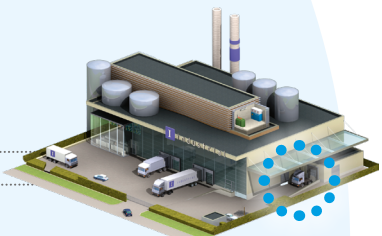
Grid ...



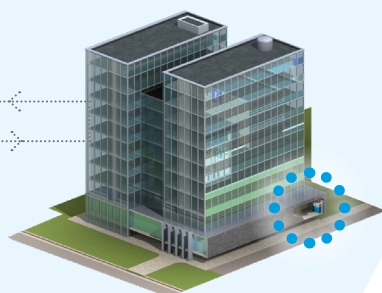
DISPERSION



PRODUCTION

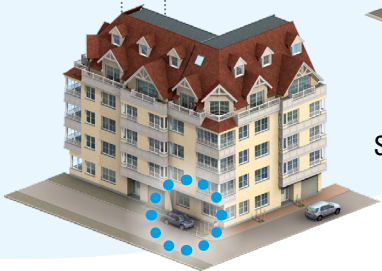
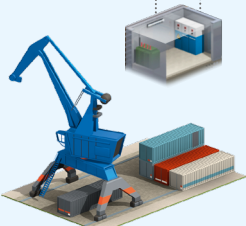


INDUSTRY



SOCIAL SERVICE SECTOR

MEDIUM VOLTAGE SWITCHGEAR



1.3. SF₆ INSULATION

SF₆ stands for sulphur hexafluoride, which is a clear and odourless, inert, non-toxic and nonflammable gas. It is extremely stable, especially due to the six covalent connections of the molecule. SF₆ has a molecular mass of 146.05, 5 times heavier than air, which makes it one of the heaviest gasses. It can be obtained in cylinders anywhere in the world and is used extensively in different sectors such as the petrochemical field, the nuclear sector, and in electron microscopy. SF₆ is even found in double glazing.

For over 30 years SF₆ gas has proven to be superior as an insulation and interruption medium in high (HV) and medium voltage (MV) installations. One of the physical characteristics of SF₆ is that the gas neutralises electrons. Its insulating property makes SF₆ especially important for medium and high voltage switchgear, switches and transformers.

In MV and HV installations, it is extremely important that the cables and switchgear are well insulated to avoid electrical arcs or short-circuits. There is even an additional advantage : SF₆ gas acts as a space saver since it requires less space than air for switching purposes.

SGC's RMU's are filled with SF₆ gas. RMU's are 'sealed for life' and require minimal maintenance. When it comes to recycling electrical components, current regulations require recuperation of components containing gas after their lifecycle ends. The recuperation of SF₆ products is regulated by law and executed by specialized companies according to a strict schedule. SGC will be available at all times to help you with this specific problem.



SF₆ filling and sealing station

1.4. STANDARDS

The DR-6/DT-6 RMU has been certified according to relevant IEC (International Electrotechnical Commission) standards : IEC 62271-1, -100, -102, -103, -105, -200 and IEC 61243-5.

The whole concept conforms to ISO procedures, certificates and even with ISO 9001 guidelines. Testing is carried out in accordance with IEC regulation and self-enforced quality requirements.

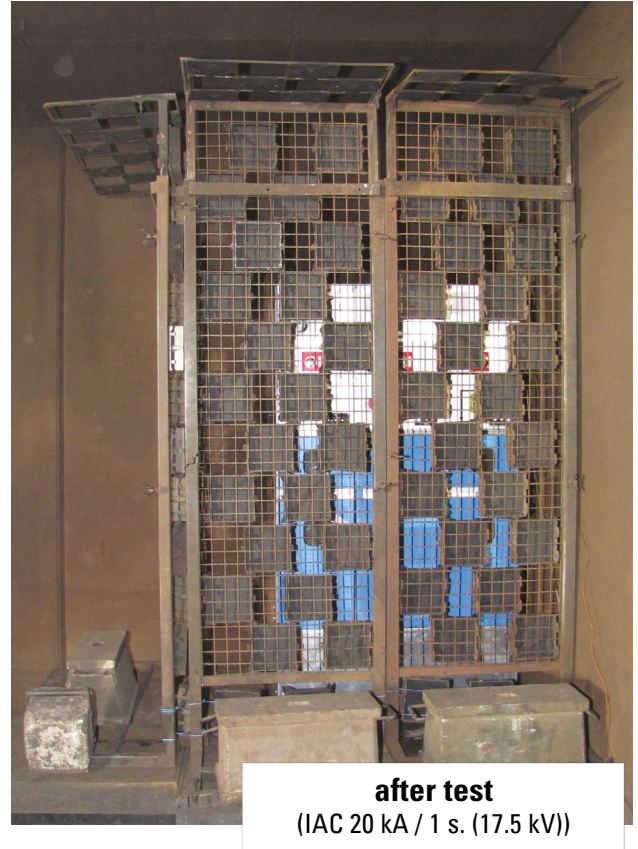
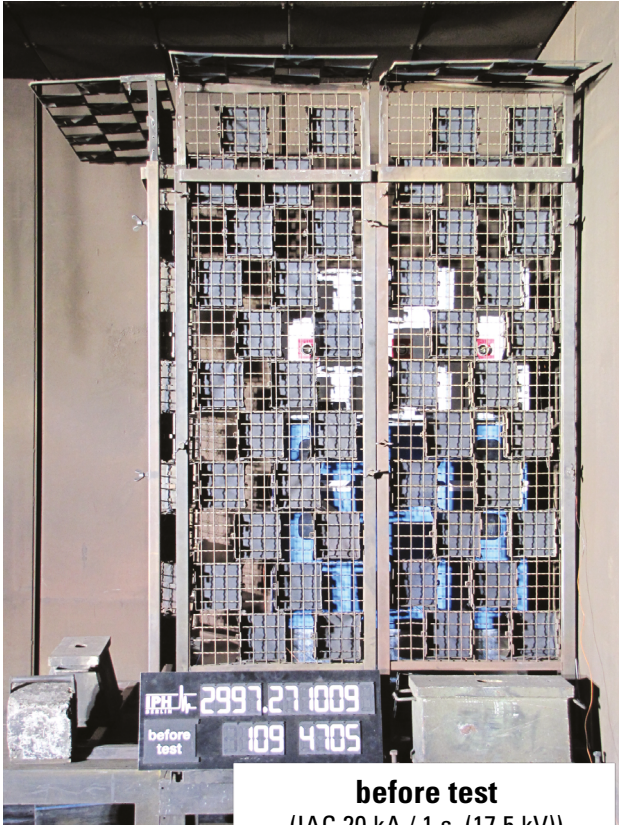
'All RMU's are built according to IEC 62271-200'



1.5. INTERNAL ARC RESISTANCE

DR-6 RMU were tested at IPH IAC (AFL) for 20 kA/1s. at a rated voltage of 17.5 kV / 24 kV according to IEC 62271-200, appendix A and met the 5 criteria.

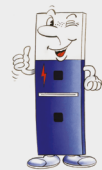
Consequently, all SGC - SwitchGear Company RMU's are internal arc resistant.



When conducting the various tests the cubicles were always set up 'trihedral shockproof' in accordance with the conditions.

INTERESTED IN OUR PRODUCTS, PRODUCTION PROCESS OR PLANT?

Please contact our Sales Team (sales@switchgearcompany.eu) for a guided tour, information on our products or visit our website www.switchgearcompany.eu



1.6. DR-6⁺/DT-6⁺ OPTION WITH BUILT-IN ARC-KILLER SV-50

Protect your infrastructure, and especially your staff against the negative consequences of an internal arc. The built-in arc-killer extinguishes an arc in less than 50 ms.

The DR-6⁺/DT-6⁺ includes the arc-killer SV-50, a system for detecting and extinguishing an internal arc. The arc-killer extinguishes the arc by directing it to a metal earthed short circuit. The arc is extinguished in less than 50 ms.

IPH type tested according to IAC : B, FLR 20 kA/1s. This



solution is patented.



without Arc-Killer



with Arc-Killer

'The built-in arc-killer extinguishes an arc in less than 50 ms.'

As a result, the expansion of hot gasses in a room can be reduced to zero. DR-6⁺ type RMU's offer protection against an internal arc classification IAC category B, FLR 20 kA/1s. (F = frontal, L = lateral, R = rear)

As a result, the operator is protected against the negative consequences of an arc, whether they stand in front of the switchboard, next to it or behind it.

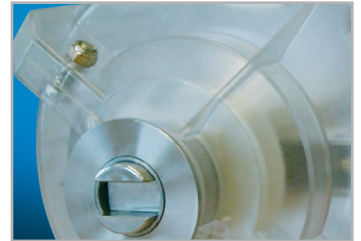
The patented SV-50 Arc-Killer takes **safety to a new level**. The operator and the environment are shielded from harm. What's more, **the arc-killer's improved security features place less strict demands on the installation room**. As such, the Arc-Killer couples security and operational safety, with flexible room demands.

2. MAIN COMPONENTS

The DR-6/DT-6 range offers a compact , safe, reliable and economical design, free of any possible environmental aggression.

2.1. LOAD BREAK SWITCH

The three position load break switch (ON/OFF/Earth) is in accordance with the IEC requirements. The concept insures a natural interlock of the primary functions of the cubicle. The arc extinction is insured by the SF₆ gas, associated to a short arcing time due to an optimized opening speed of the mechanical drive and a patented arc blowing principle that combines optimal revolution of the gas with perfect electrical contacts.



It is of the class E3/M1 (E3 : 5 making, 100 x CO mainly active load. M1 : 1000 mech operations/ service position) following IEC 62271-103. Mevoco's experience in the load break switch RV44 of the DF-2 range and RV53 of the DF-3 range finds here a perfect application.

2.2. VACUUM CIRCUIT BREAKER ISM

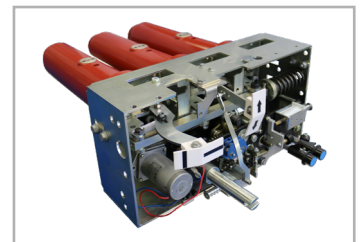
The ISM vacuum circuit breaker (VCB) of the magnetic actuator type uses the latest vacuum interrupter technology. The VCB can only be closed electrically, mechanical closing is not possible (*). The VCB can be opened manually as electrically.



The circuit breaker operates through a control module and a self powered digital protection relay RP600, together with the CT allowing the detection of over-current and earth faults failures. (*) In absence of auxiliary voltage, a manually operated generator can be used.

2.3. VACUUM CIRCUIT BREAKER VA-3

This vacuum circuit breaker of the spring mechanism type, is an extremely compact circuit breaker which is made for intergration in switchgears type Ring Main Unit and like all the other components of the product range, synonymous with high reliability and safety. The VA-3 concept offers the security and reliability with a large spectrum of possibilities in the range from 12 to 24 kV.



The vacuum circuit breaker is available in two main versions :

- VA-3 CO
- VA-3 0-0,3s-CO-15s-CO

2.4. THE FUSE HOLDERS

The fuse holders are made for HRC fuses of the DIN and UTE type for voltages of 10, 17,5 and 24 kV. Fuse holders are made from epoxy with a non-losable cover, and a fuse supporting structure firmly fixed to the cover.

Earthing on both sides of the fuses is clearly marked on the synoptic diagram. The fuse holder is water tight and tested in accordance with the IEC standards. The access to the fuse holders



is facilitated by a simple and logic interlock system allowing the opening of the door only after earthing of the cubicle.

2.5. THE MECHANICAL DRIVES

The mechanical drives have already been subject to intensive tests and usage in the DF-2 range of products. The same design has been implemented in the DR-6/DT-6. The steel used for the drives has been chosen because of their high tensile force, toughness and resistance to bending.

The mechanical drive accommodates both the operating axles (LBS and earth) and the interlocks. The spring type drive is operating independently of the operator and does not allow any function violation.

The indicator of the mechanical drive is directly connected with the LBS which assures at any time the real status of the LBS. The forces needed to control the mechanism are low which results in a high user-friendliness.

Optional : the drive can be motorized and can receive a number of options, allowing remote control, remote position indication and integration into a SCADA operated network. Voltage relays, are also located in this compartment.

Any engine control with the necessary electrical switchgear, a control and clamp strip are also installed in this compartment. The compartment can be accessed very easily by disassembling the front panel.



2.6. CABLE CONNECTION

The cables in the switch and circuit breaker compartment are connected by means of bushings type interface C (630 A) with M16 screwed contacts. If desired, those functions can be equipped with bushings type interface B (400 A). The cable connection on the switch fuse combination is performed by means plugs type interface A (250 A), a maximum section of 95 mm² per cable can be connected. All bushings are made according to EN 50181 standards.

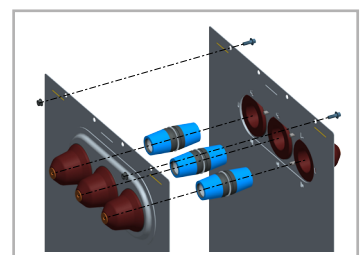
The cable compartment size allows one connector per bushing with a maximum of 240 mm² per cable (On request, lightning arrestors can also be accommodated in the cable box as well as two cables per bushing).



2.7. EXTENSIBILITY CONCEPT

Extensibility of the ring main unit is ensured by side placed or inner cone bushings. An insulated extension device connects the two sets to be extended.

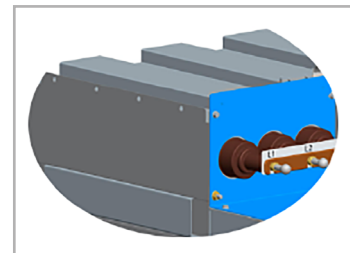
Extension requires no special tooling nor special on site condition.



2.8. CABLE TEST POINT

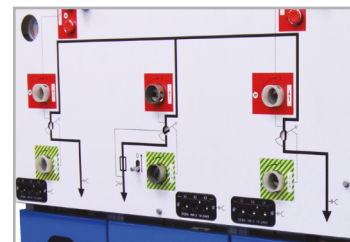
By means of an supplementary bushing that is connected directly to the cable bushing, it is possible to do a dielectric test on the cables without disconnecting the cables.

These specific points belong to the switchgear earthing system. In service, the specific points for voltage injection are short-circuited by an accessible external earthing bar. So to inject the test voltage, it is necessary to open the earthing circuit of the switchgear, by removal of the short-circuiting bar. It is not necessary to access the cable compartment, nor disconnect the cables, so the cable installation conditions do not change.



2.9. SYNOPTIC DIAGRAM AND ACCESSORIES

A clear, logic and well understandable synoptic diagram is placed in front of each of the functions. This diagram also supports the voltage detection system (type HR or LRM), showing the presence of the voltage on the cables and allowing the use of phase concordance units. Short circuit indicators can find their place in the LV compartment and the associated ring type CT's in the cable compartment. Complementary accessories can be accommodated in a well designed LV box to be placed on the top of the concerned function(s).



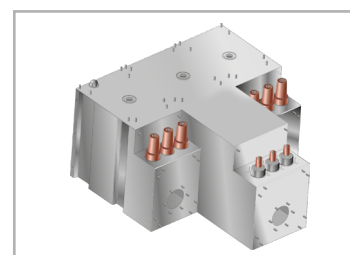
2.10. PROTECTION RELAY

The self powered digital protection relay, which is integrated in the LV-compartment, has a wide range of protection functions, is equipped with 4 outgoing contact points and 2 free programmable outgoing points. The relay functions are easy accessible and programmable with the help of a laptop or with the support of the menu oriented interface. Optional : another type of relay can be built in.



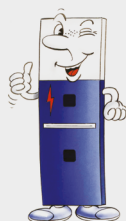
2.11. THE ENCLOSURE

The stainless steel enclosure is manufactured on brand new, up to date machines associating lasercutting, robotised bending and 3D laser welding. The welded tank is sealed for life and tested under vacuum, in strict conditions with experienced equipment. The enclosure accommodates the life components and is equipped with a rupture disk deviating the overpressure in the unlikely event of an internal fault.



OTHER OPTIONS & DIMENSIONS?

Please consult us for options and dimensions other than those mentioned in this catalogue.



'All models can be equipped with a wide range of optional features ...'

3. DR-6/DT-6 MODULES RANGE

3.1. TECHNICAL SPECIFICATIONS

Rated voltage	kV	12	17.5	24
General specifications				
Impulse withstand voltage 1,2 / 50 µsec.				
To earth and between phases	kV	75	95	125
Over the insulation distance	kV	85	110	145
Power frequency voltage test 1 min.				
To earth and between phases	kV	28	38	50
Over the insulation distance	kV	32	45	60
Rated frequency	Hz	50/60		
Rated short time current 3 s.	kA	21	21	21
Rated peak value of the current	kÂ	52.5	52.5	52.5
Internal arc 1 s. IEC 62271-200 (5 criteria)	kA	20	20	20
Degree of protection				
HV-compartment		IP6X		
LV- and cable compartment		IP4X		
Rated gas pressure at 20 °C	Bar	0.5 bar overpressure		
Line Feeder				
Short-circuit making current (I _{ma})	kA	20	20	20
Breaking capacity (IEC 62271-103)		Class E3		
Rated current (I _{load})	A	630	630	630
Closed loop current (I _{loop})	A	630	630	630
Cable charging current (I _{cc})	A	25	25	25
Earth fault current (I _{ef1})	A	180	180	180
Number of makings		5		
Transformer feeder				
Rated current	A	63	63	63
Fuse switch				
Short circuit breaking capacity (limited by the fuse)	kA	25	25	25
Making capacity	kÂ	63	63	63
Circuit breaker				
Short circuit breaking capacity 1s.	kA	25	20	16
Making capacity	kÂ	63	50	40

3.2. DESCRIPTIONS

DR-6



- LBS operating axle
- Position indicator
- Trip switch-fuse combination
- Earthing switch operating axle
- Synoptic diagram
- Voltage detection system
- Acces door to cable compartment

DT-6

- Circuit breaker tripping axle
- Operation button circuit breaker
- Protection relay
- LBS operating axle
- Position indicator
- Earthing switch operating axle
- Voltage detections system (VDS)
- Acces door to cable compartment



3.3. MODULES - SPECIFICATIONS & DIMENSIONS

All modules are available in a **compact version (DR-6 C /DT-6 C)** or an **extensible version (DR-6 E /DT-6 E)** and with the optional arc-killer **SV-50 (DR-6 C/E+ / DT-6 C/E+)**

DR-6E K	p. 16
DR-6E T	p. 17
DR-6E D	p. 18
DR-6C 2K	p. 19
DR-6C 3K	p. 20
DR-6C 4K	p. 21
DR-6C 2KD	p. 22
DR-6C KT	p. 23
DR-6C K2T	p. 25
DR-6C K3T	p. 27
DT-6C 2KT	p. 29

DT-6C 3KT

p. 31

DT-6C 2K2T

p. 33

DT-6C 2D

p. 35

DT-6C 3D

p. 37

DT-6C 4D

p. 39

DT-6C KD

p. 41

DT-6C K2D

p. 43

DT-6C K3D

p. 45

DT-6C 2KD

p. 47

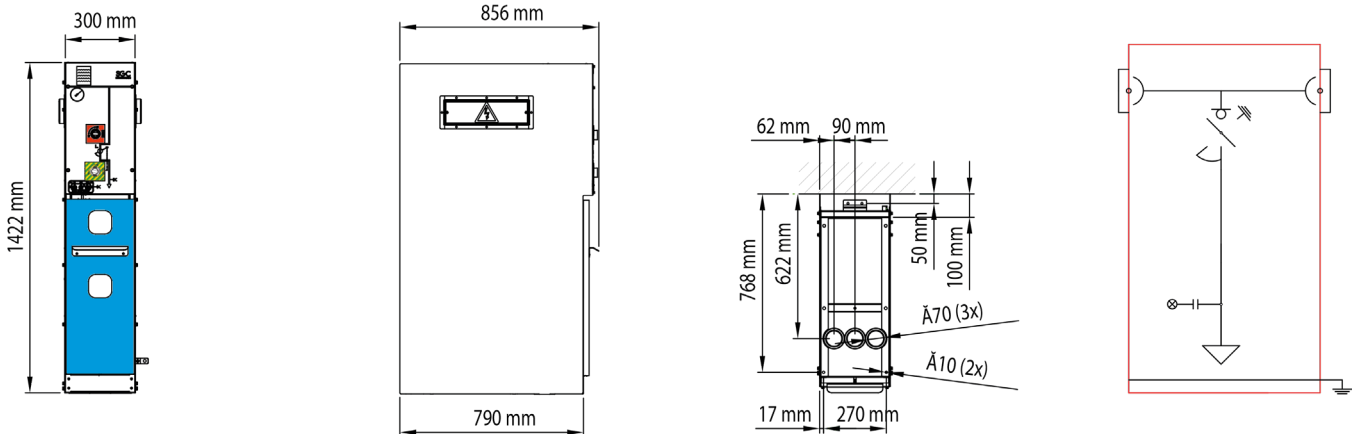
DT-6C 3KD

p. 49

DT-6C 2K2D

p. 51

DR-6E K



Standard Equipment :

- Three phase three position load break switch of the type RV50, class E3 according to IEC 62271-103
- Interlocked earthing switch with a making capacity up to max. 50 kA
- Bushing interface type C, according to DIN EN 50181
- Cable clamps for monopolar cable with section up to 240 mm²
- Door interlock
- Integrated voltage indicators of the type Mevoco HR-3
- LV compartment
- MV cable access door
- Floor panels
- Operating handle

Options :

- Set of auxiliary contacts on the load break switch
- Set of auxiliary contacts on the earthing switch
- Key interlock on the load break switch
- Key interlock on the earthing switch
- Key interlock on load break switch and earthing switch
- No door interlock
- Motor operation on the load break switch : 24-48-110 V DC or 110-230 V AC
- Motor operation on the earthing switch : 24-48-110 V DC or 110-230 V AC
- Short circuit indicator (to be specified by the customer)
- Cubicle base of a height of 200, 300, 400 mm (other dimensions on request)
- Push button or remote control
- Arc-Killer SV-50
- Lateral extension
- Manometer with or without auxiliary contact
- Integrated voltage indicator of the type 'Kries Capdis S1+', 'Kries Capdis S2+', 'Horstmann type Wega 1.2C', 'Horstmann type Wega 2.2C'
- Integrated windows

SPECIFICATIONS & DIMENSIONS :

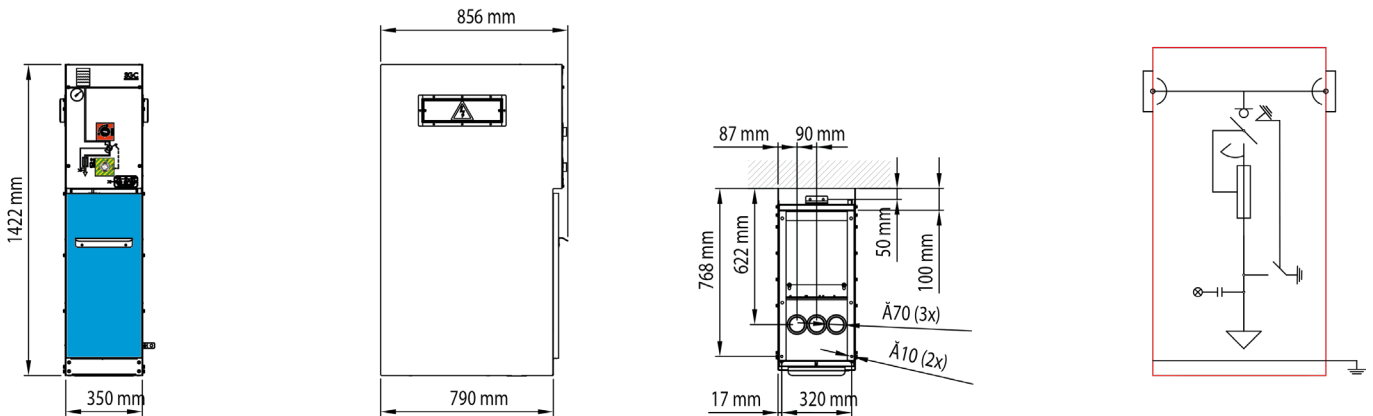
Rated Voltage	kV	12	17,5	24/25
Rated current	A	630	630	630
Rated short term current	kA	21	21	21
Time of the rated short time current	s	3	3	3
Width	mm	300	300	300
Depth	mm	856	856	856
Height	mm	1422	1422	1422
Height between bottom and bushing	mm	745	745	745
Weight	kg	315	315	315



OTHER OPTIONS & DIMENSIONS ?

Please consult us for options and dimensions other than those mentioned in this catalogue.

DR-6E T



Standard Equipment :

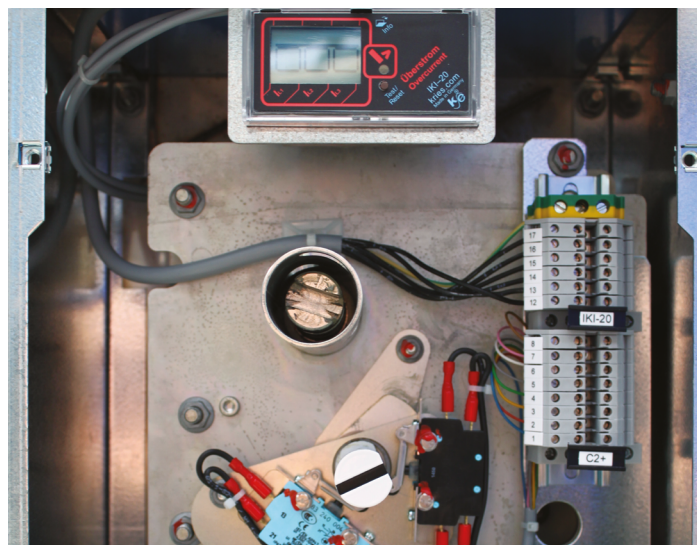
- Three phase three position load break switch of the type RV50, class E3 according to IEC 62271-103
- Interlocked earthing switch with a making capacity up to max. 50 kA
- Bushing interface type C, according to DIN EN 50181
- Cable clamps for monopolar cable with section up to 240 mm²
- Door interlock
- Integrated voltage indicators of the type Mevoco HR-3
- LV compartment
- MV cable access door
- Floor panels
- Operating handle

Options :

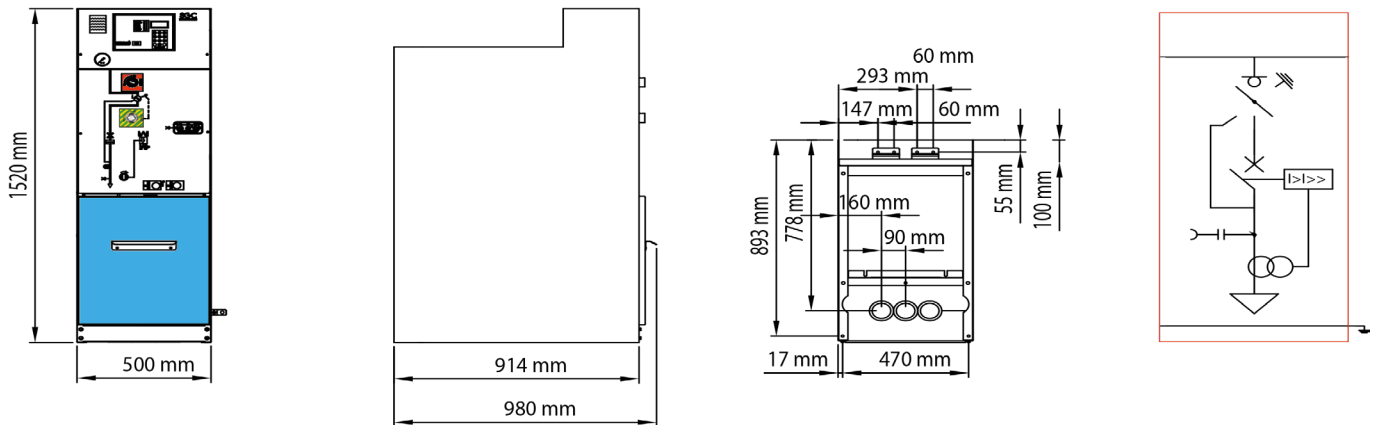
- Set of auxiliary contacts on the load break switch
- Set of auxiliary contacts on the earthing switch
- Key interlock on the load break switch
- Key interlock on the earthing switch
- Key interlock on load break switch and earthing switch
- No door interlock
- Motor operation on the load break switch : 24-48-110 V DC or 110-230 V AC
- Motor operation on the earthing switch : 24-48-110 V DC or 110-230 V AC
- Short circuit indicator (to be specified by the customer)
- Cubicle base of a height of 200, 300, 400 mm (other dimensions on request)
- Push button or remote control
- Arc-Killer SV-50
- Lateral extension
- Manometer with or without auxiliary contact
- Integrated voltage indicator of the type 'Kries Capdis S1+', 'Kries Capdis S2+', 'Horstmann type Wega 1.2C', 'Horstmann type Wega 2.2C'
- Integrated windows

SPECIFICATIONS & DIMENSIONS :

Rated Voltage	kV	12	17,5	24/25
Rated current	A	630	630	630
Rated short term current	kA	21	21	21
Time of the rated short time current	s	3	3	3
Width	mm	350	350	350
Depth	mm	856	856	856
Height	mm	1422	1422	1422
Height between bottom and bushing	mm	745	745	745
Weight	kg	210	210	210



DR-6E D



Standard Equipment :

- Three phase three position load break switch of the type RV50, class E3 according to IEC 62271-103
- Interlocked earthing switch with a making capacity up to max. 50 kÂ
- Bushing interface type C, according to DIN EN 50181
- Cable clamps for monopolar cable with section up to 240 mm²
- Door interlock
- Integrated voltage indicators of the type Mevoco HR-3
- LV compartment
- MV cable access door
- Floor panels
- Operating handle

Options :

- Set of auxiliary contacts on the load break switch
- Set of auxiliary contacts on the earthing switch
- Key interlock on the load break switch
- Key interlock on the earthing switch
- Key interlock on load break switch and earthing switch
- No door interlock
- Motor operation on the load break switch : 24-48-110 V DC or 110-230 V AC
- Motor operation on the earthing switch : 24-48-110 V DC or 110-230 V AC
- Short circuit indicator (to be specified by the customer)
- Cubicle base of a height of 200, 300, 400 mm (other dimensions on request)
- Push button or remote control
- Arc-Killer SV-50
- Lateral extension
- Manometer with or without auxiliary contact
- Integrated voltage indicator of the type 'Kries Capdis S1+', 'Kries Capdis S2+', 'Horstmann type Wega 1.2C', 'Horstmann type Wega 2.2C'
- Integrated windows

SPECIFICATIONS & DIMENSIONS :

Rated Voltage	kV	12	17,5	24/25
Rated current	A	630	630	630
Rated short term current	kA	21	21	21
Time of the rated short time current	s	3	3	3
Width	mm	500	500	500
Depth	mm	980	980	980
Height	mm	1520	1520	1520
Height between bottom and bushing	mm	745	745	745
Weight	kg	315	315	315

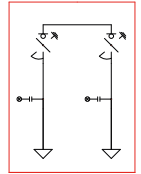
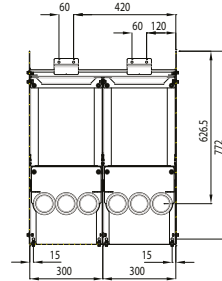
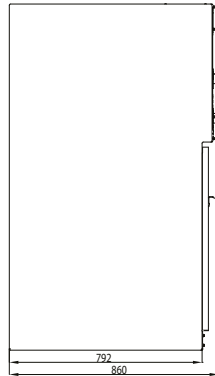
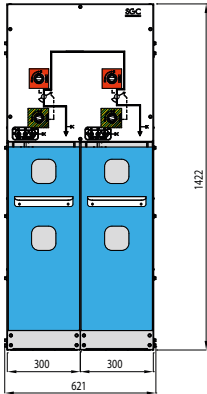
Options for vacuum circuit breaker :

- Operating sequence CO or O-0,3s-CO-15s-CO
- Motor operation 24-48-110 V DC / 110-220 V AC
- Auxiliary contacts (optionally spring charged)
- Operation counter
- Closing coil
- Tripping coil (x2)
- Mechanical close and/or trip button

OTHER OPTIONS & DIMENSIONS ?

Please consult us for options and dimensions other than those mentioned in this catalogue.

DR6-C 2K



Standard Equipment :

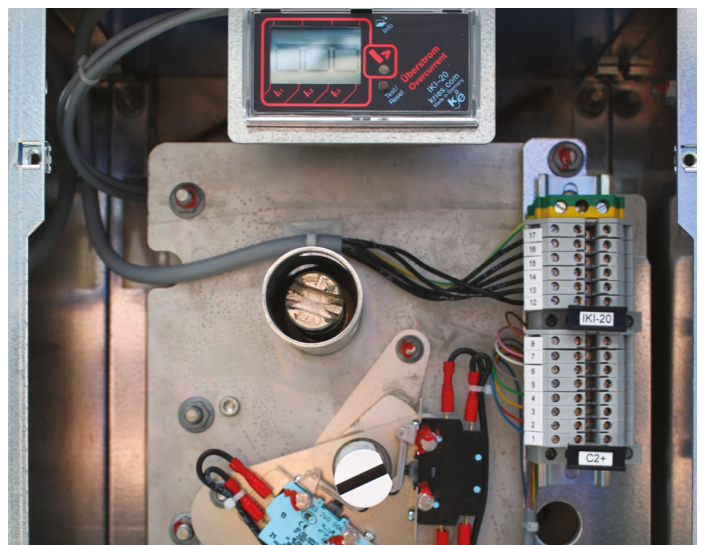
- Three phase three position load break switch of the type RV50, class E3 according to IEC 62271-103
- Interlocked earthing switch with a making capacity up to max. 50 kA
- Bushing interface type C, according to DIN EN 50181
- Cable clamps for monopolar cable with section up to 240 mm²
- Door interlock
- Integrated voltage indicators of the type Mevoco HR-3
- LV compartment
- MV cable access door
- Floor panels
- Operating handle

Options :

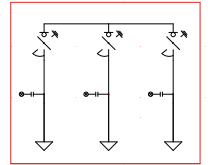
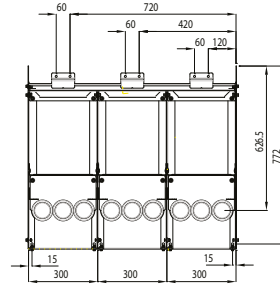
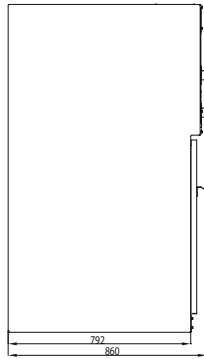
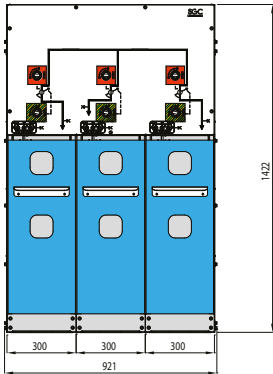
- Set of auxiliary contacts on the load break switch
- Set of auxiliary contacts on the earthing switch
- Key interlock on the load break switch
- Key interlock on the earthing switch
- Key interlock on load break switch and earthing switch
- No door interlock
- Motor operation on the load break switch : 24-48-110 V DC or 110-230 V AC
- Motor operation on the earthing switch : 24-48-110 V DC or 110-230 V AC
- Short circuit indicator (to be specified by the customer)
- Cubicle base of a height of 200, 300, 400 mm (other dimensions on request)
- Push button or remote control
- Arc-Killer SV-50
- Lateral extension
- Manometer with or without auxiliary contact
- Integrated voltage indicator of the type 'Kries Capdis S1+', 'Kries Capdis S2+', 'Horstmann type Wega 1.2C', 'Horstmann type Wega 2.2C'
- Integrated windows

SPECIFICATIONS & DIMENSIONS :

Rated Voltage	kV	12	17,5	24/25
Rated current	A	630	630	630
Rated short term current	kA	21	21	21
Time of the rated short time current	s	3	3	3
Width	mm	621	621	621
Depth	mm	860	860	860
Height	mm	1422	1422	1422
Height between bottom and bushing	mm	745	745	745
Weight	kg	210	210	210



DR-6C 3K



Standard Equipment :

- Three phase three position load break switch of the type RV50, class E3 according to IEC 62271-103
- Interlocked earthing switch with a making capacity up to max. 50 kA
- Bushing interface type C, according to DIN EN 50181
- Cable clamps for monopolar cable with section up to 240 mm²
- Door interlock
- Integrated voltage indicators of the type Mevoco HR-3
- LV compartment
- MV cable access door
- Floor panels
- Operating handle

Options :

- Set of auxiliary contacts on the load break switch
- Set of auxiliary contacts on the earthing switch
- Key interlock on the load break switch
- Key interlock on the earthing switch
- Key interlock on load break switch and earthing switch
- No door interlock
- Motor operation on the load break switch : 24-48-110 V DC or 110-230 V AC
- Motor operation on the earthing switch : 24-48-110 V DC or 110-230 V AC
- Short circuit indicator (to be specified by the customer)
- Cubicle base of a height of 200, 300, 400 mm (other dimensions on request)
- Push button or remote control
- Arc-Killer SV-50
- Lateral extension
- Manometer with or without auxiliary contact
- Integrated voltage indicator of the type 'Kries Capdis S1+', 'Kries Capdis S2+', 'Horstmann type Wega 1.2C', 'Horstmann type Wega 2.2C'
- Integrated windows

SPECIFICATIONS & DIMENSIONS :

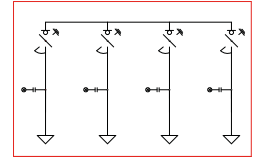
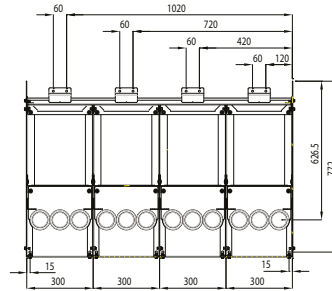
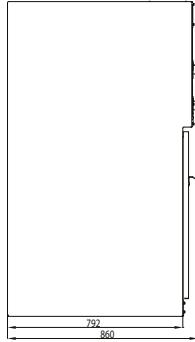
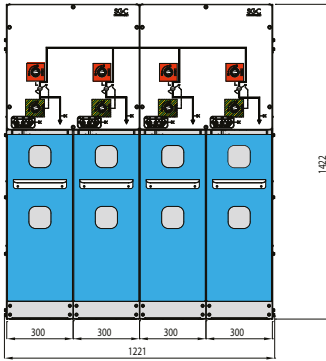
Rated Voltage	kV	12	17,5	24/25
Rated current	A	630	630	630
Rated short term current	kA	21	21	21
Time of the rated short time current	s	3	3	3
Width	mm	921	921	921
Depth	mm	860	860	860
Height	mm	1422	1422	1422
Height between bottom and bushing	mm	745	745	745
Weight	kg	315	315	315



OTHER OPTIONS & DIMENSIONS ?

Please consult us for options and dimensions other than those mentioned in this catalogue.

DR-6C 4K



Standard Equipment :

- Three phase three position load break switch of the type RV50, class E3 according to IEC 62271-103
- Interlocked earthing switch with a making capacity up to max. 50 kÂ
- Bushing interface type C, according to DIN EN 50181
- Cable clamps for monopolar cable with section up to 240 mm²
- Door interlock
- Integrated voltage indicators of the type Mevoco HR-3
- LV compartment
- MV cable access door
- Floor panels
- Operating handle

Options :

- Set of auxiliary contacts on the load break switch
- Set of auxiliary contacts on the earthing switch
- Key interlock on the load break switch
- Key interlock on the earthing switch
- Key interlock on load break switch and earthing switch
- No door interlock
- Motor operation on the load break switch : 24-48-110 V DC or 110-230 V AC
- Motor operation on the earthing switch : 24-48-110 V DC or 110-230 V AC
- Short circuit indicator (to be specified by the customer)
- Cubicle base of a height of 200, 300, 400 mm (other dimensions on request)
- Push button or remote control
- Arc-Killer SV-50
- Lateral extension
- Manometer with or without auxiliary contact
- Integrated voltage indicator of the type 'Kries Capdis S1+', 'Kries Capdis S2+', 'Horstmann type Wega 1.2C', 'Horstmann type Wega 2.2C'
- Integrated windows

SPECIFICATIONS & DIMENSIONS :

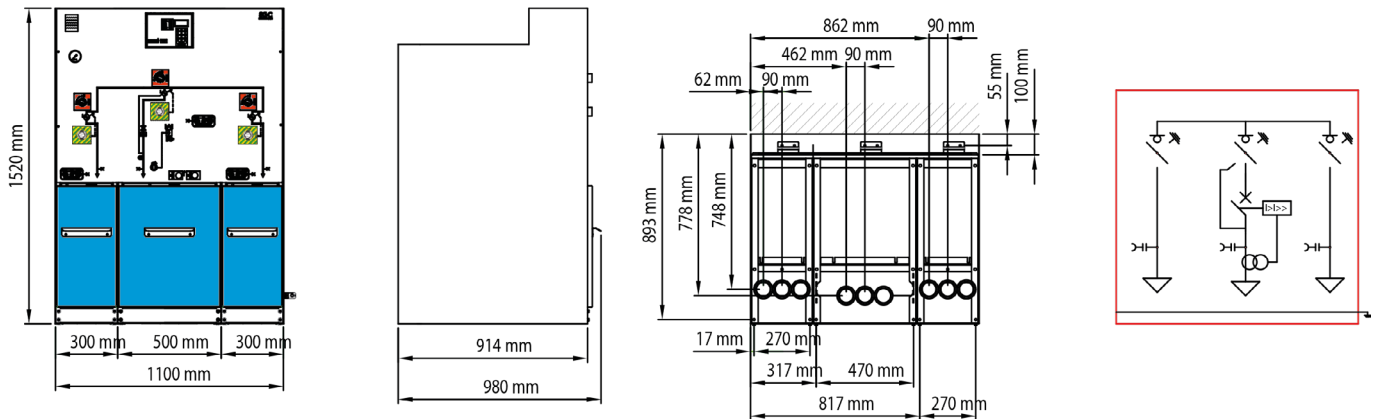
Rated Voltage	kV	12	17,5	24/25
Rated current	A	630	630	630
Rated short term current	kA	21	21	21
Time of the rated short time current	s	3	3	3
Width	mm	1221	1221	1221
Depth	mm	860	860	860
Height	mm	1422	1422	1422
Height between bottom and bushing	mm	745	745	745
Weight	kg	420	420	420



OTHER OPTIONS & DIMENSIONS ?

Please consult us for options and dimensions other than those mentioned in this catalogue.

DR-6C 2KD



Standard Equipment :

- Three phase three position load break switch of the type RV50, class E3 according to IEC 62271-103
- Interlocked earthing switch with a making capacity up to max. 50 kA
- Bushing interface type C, according to DIN EN 50181
- Cable clamps for monopolar cable with section up to 240 mm²
- Door interlock
- Integrated voltage indicators of the type Mevoco HR-3
- LV compartment
- MV cable access door
- Floor panels
- Operating handle

Options :

- Set of auxiliary contacts on the load break switch
- Set of auxiliary contacts on the earthing switch
- Key interlock on the load break switch
- Key interlock on the earthing switch
- Key interlock on load break switch and earthing switch
- No door interlock
- Motor operation on the load break switch : 24-48-110 V DC or 110-230 V AC
- Motor operation on the earthing switch : 24-48-110 V DC or 110-230 V AC
- Short circuit indicator (to be specified by the customer)
- Cubicle base of a height of 200, 300, 400 mm (other dimensions on request)
- Push button or remote control
- Arc-Killer SV-50
- Lateral extension
- Manometer with or without auxiliary contact
- Integrated voltage indicator of the type 'Kries Capdis S1+', 'Kries Capdis S2+', 'Horstmann type Wega 1.2C', 'Horstmann type Wega 2.2C'
- Integrated windows

SPECIFICATIONS & DIMENSIONS :

Rated Voltage	kV	12	17,5	24/25
Rated current	A	630	630	630
Rated short term current	kA	21	21	21
Time of the rated short time current	s	3	3	3
Width	mm	1100	1100	1100
Depth	mm	980	980	980
Height	mm	1520	1520	1520
Height between bottom and bushing	mm	745	745	745
Weight	kg	315	315	315

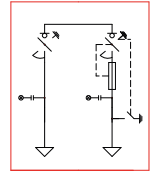
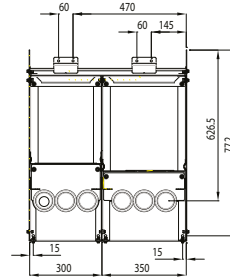
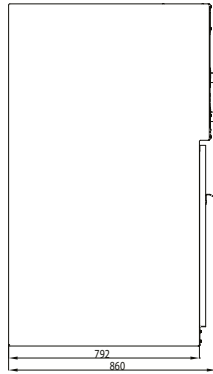
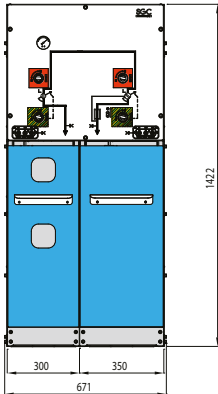
Options for vacuum circuit breaker :

- Operating sequence CO or O-0,3s-CO-15s-CO
- Motor operation 24-48-110 V DC / 110-220 V AC
- Auxiliary contacts (optionally spring charged)
- Operation counter
- Closing coil
- Tripping coil (x2)
- Mechanical close and/or trip button

OTHER OPTIONS & DIMENSIONS ?

Please consult us for options and dimensions other than those mentioned in this catalogue.

DR-6C KT



Standard equipment for the K function :

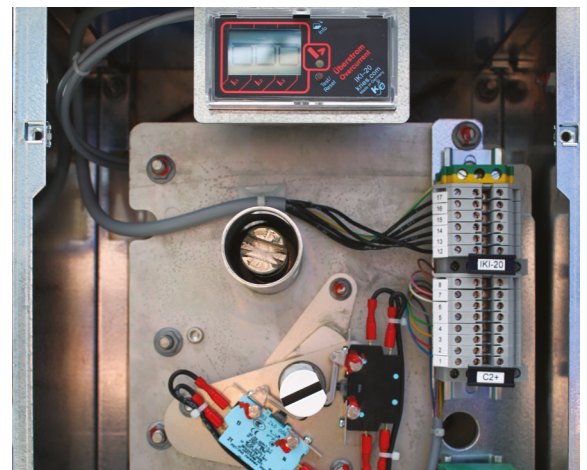
- Three phase three positions load break switch of the type RV50, class E3 according to IEC 62271-103
- Interlocked earthing switch with a making capacity up to max. 50 kÂ
- Bushing interface type C, according to DIN EN 50181
- Cable clamps for monopolar cable with section up to 240 mm²
- Door interlock
- Integrated voltage indicators of the type Mevoco HR-3
- LV compartment
- MV cable access door
- Floor panels
- Operating handle

Standard equipment for the T function :

- Three phase three positions load break switch/ fuse combination of the type RV50, according to IEC 62271-105
- 24 kV - 63 A - Icc 25 kA with making capacity of 63 kÂ
- Double interlocked earthing switch, with a making capacity up to 50 kÂ
- Fuse holder for HRC fuses :
 - e = 292 mm DIN 10 / 17.5 kV
 - e = 442 mm DIN 10 / 24 kV
 - e = 520 mm UTE 24 kV
- Three pole fuse trip in case of one fuse tripping
- Bushing interface type A, according to DIN EN 50181
- Switch off mechanism through hitting bolt
- Cable clamps for monopolar cable with section up to 95 mm²
- Door interlock
- Integrated voltage indicators of the type Mevoco HR-3
- LV compartment
- MV cable access door
- Floor panels

SPECIFICATIONS & DIMENSIONS :

Rated Voltage	kV	12	17,5	24/25
Rated current	A	630	630	630
Rated short term current	kA	21	21	21
Time of the rated short time current	s	3	3	3
Width	mm	671	671	671
Depth	mm	860	860	860
Height	mm	1422	1422	1422
Height between bottom and bushing (K / T)	mm	745 / 325	745 / 325	745 / 325
Fuse size	mm	292 (DIN)	292 / 442 (DIN)	292 / 442 / 520 (DIN) / (UTE)
Weight	kg	295	295	295





Options for K and T function :

- Set of auxiliary contacts on the load break switch
- Set of auxiliary contacts on the earthing switch
- Key interlock on the load break switch
- Key interlock on the earthing switch
- Key interlock on both load break switch and earthing switch
- Motor operation on the load break switch : 24-48-110 V DC or 110-230 V AC
- Motor operation on the earthing switch : 24-48-110 V DC or 110-230 V AC
- No door interlock
- Short circuit indicator (to be specified by the customer)
- Cubicle base of a height of 200, 300, 400 mm (other dimensions on request)
- Push button control
- Remote control
- Arc-Killer SV-50
- Lateral extension
- Manometer
- Manometer with auxiliary contact
- Integrated voltage indicator of the type 'Kries Capdis S1+', 'Kries Capdis S2+', 'Horstmann type Wega 1.2C', 'Horstmann type Wega 2.2C'
- Integrated windows

Options for T function only :

- Tripping coil (24-48-110 V DC or 110-230 V AC)
- Time delayed/direct under voltage release (24-48-110 V DC or 110-230 V AC)
- Closing coil (24-48-110 V DC or 110-230 V AC)
- HRC fuses or spare fuses
- Fault indicator 'Fuse tripped'
- Fault contact 'Fuse tripped'
- Automatic reclosing
- Integrated windows

DR-6/DT-6 Key features :

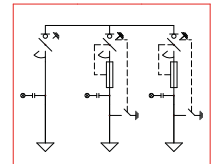
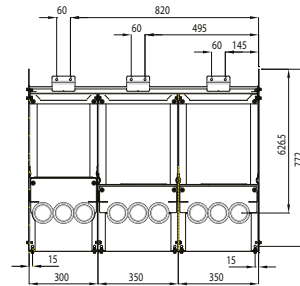
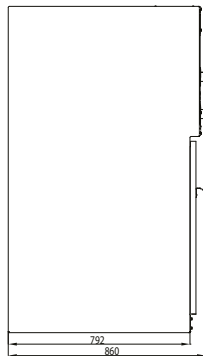
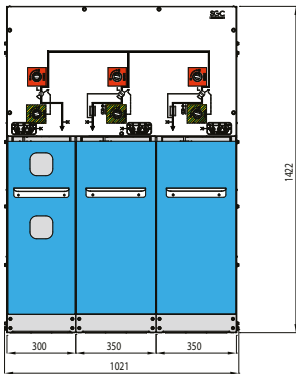
- Compact design
- Solid interlocks
- Ease of use
- No emission of SF₆ in case of internal arc due to the patented Arc-killer
- Long life expectancy



OTHER OPTIONS & DIMENSIONS ?

Please consult us for options and dimensions other than those mentioned in this catalogue.

DR-6C K2T



Standard equipment for the K function :

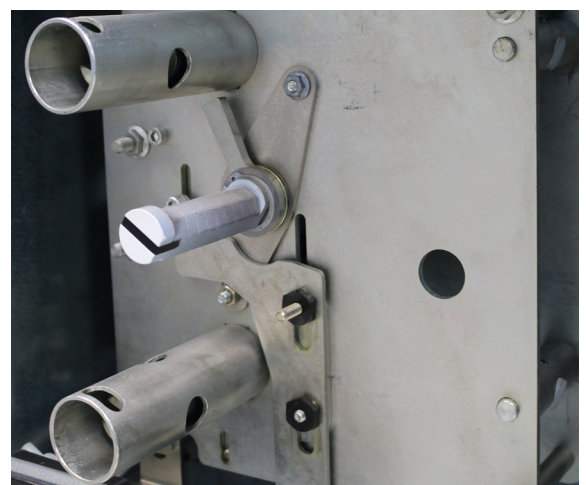
- Three phase three positions load break switch of the type RV50, class E3 according to IEC 62271-103
- Interlocked earthing switch with a making capacity up to max. 50 kÂ
- Bushing interface type C, according to DIN EN 50181
- Cable clamps for monopolar cable with section up to 240 mm²
- Door interlock
- Integrated voltage indicators of the type Mevoco HR-3
- LV compartment
- MV cable access door
- Floor panels
- Operating handle

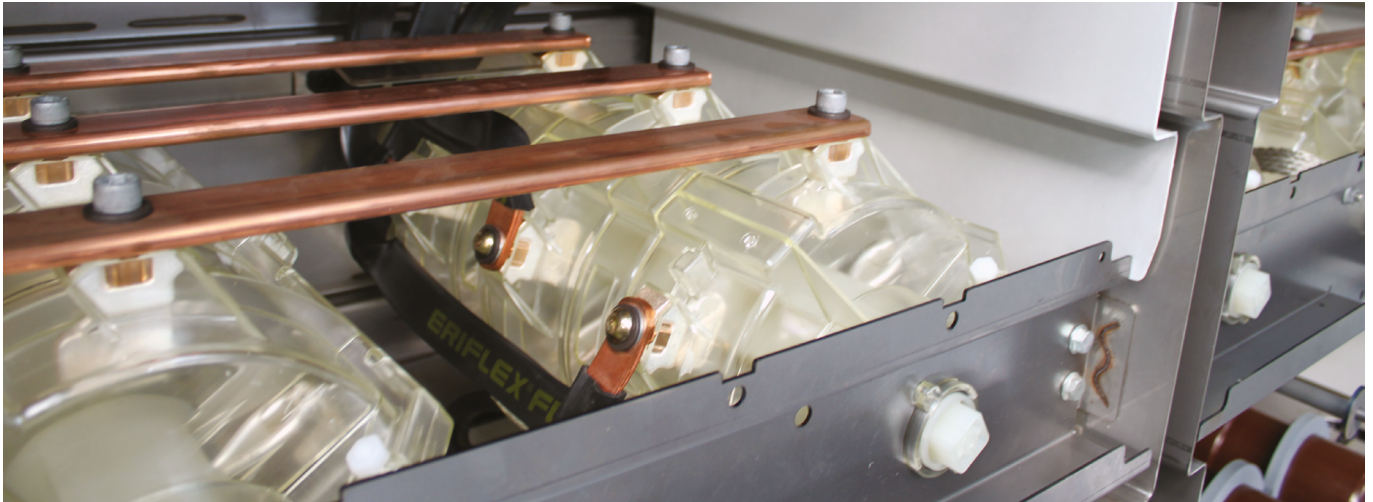
Standard equipment for the T function :

- Three phase three positions load break switch/ fuse combination of the type RV50, according to IEC 62271-105
- 24 kV - 63 A - Icc 25 kA with making capacity of 63 kÂ
- Double interlocked earthing switch, with a making capacity up to 50 kÂ
- Fuse holder for HRC fuses :
 - e = 292 mm DIN 10 / 17.5 kV
 - e = 442 mm DIN 10 / 24 kV
 - e = 520 mm UTE 24 kV
- Three pole fuse trip in case of one fuse tripping
- Bushing interface type A, according to DIN EN 50181
- Switch off mechanism through hitting bolt
- Cable clamps for monopolar cable with section up to 95 mm²
- Door interlock
- Integrated voltage indicators of the type Mevoco HR-3
- LV compartment
- MV cable access door
- Floor panels

SPECIFICATIONS & DIMENSIONS :

Rated Voltage	kV	12	17,5	24/25
Rated current	A	630	630	630
Rated short term current	kA	21	21	21
Time of the rated short time current	s	3	3	3
Width	mm	1021	1021	1021
Depth	mm	860	860	860
Height	mm	1422	1422	1422
Height between bottom and bushing (K / T)	mm	745 / 325	745 / 325	745 / 325
Fuse size	mm	292 (DIN)	292 / 442 (DIN)	292 / 442 / 520 (DIN) / (UTE)
Weight	kg	485	485	485





Options for K and T function :

- Set of auxiliary contacts on the load break switch
- Set of auxiliary contacts on the earthing switch
- Key interlock on the load break switch
- Key interlock on the earthing switch
- Key interlock on both load break switch and earthing switch
- Motor operation on the load break switch : 24-48-110 V DC or 110-230 V AC
- Motor operation on the earthing switch : 24-48-110 V DC or 110-230 V AC
- No door interlock
- Short circuit indicator (to be specified by the customer)
- Cubicle base of a height of 200, 300, 400 mm (other dimensions on request)
- Push button control
- Remote control
- Arc-Killer SV-50
- Lateral extension
- Manometer
- Manometer with auxiliary contact
- Integrated voltage indicator of the type 'Kries Capdis S1+', 'Kries Capdis S2+', 'Horstmann type Wega 1.2C', 'Horstmann type Wega 2.2C'
- Integrated windows

Options for T function only :

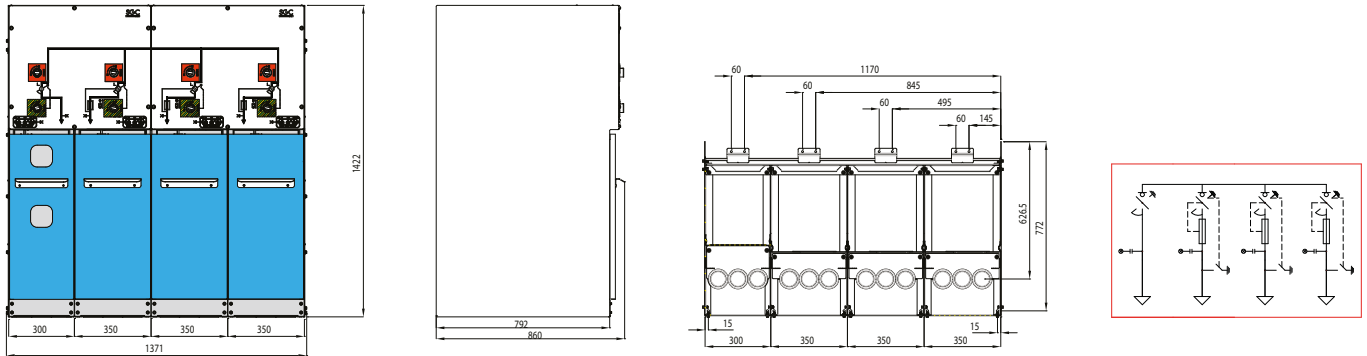
- Tripping coil (24-48-110 V DC or 110-230 V AC)
- Time delayed/direct under voltage release (24-48-110 V DC or 110-230 V AC)
- Closing coil (24-48-110 V DC or 110-230 V AC)
- HRC fuses or spare fuse
- Fault indicator 'Fuse tripped'
- Fault contact 'Fuse tripped'
- Automatic reclosing
- Integrated windows



OTHER OPTIONS & DIMENSIONS ?

Please consult us for options and dimensions other than those mentioned in this catalogue.

DR-6C K3T



Standard equipment for the K function :

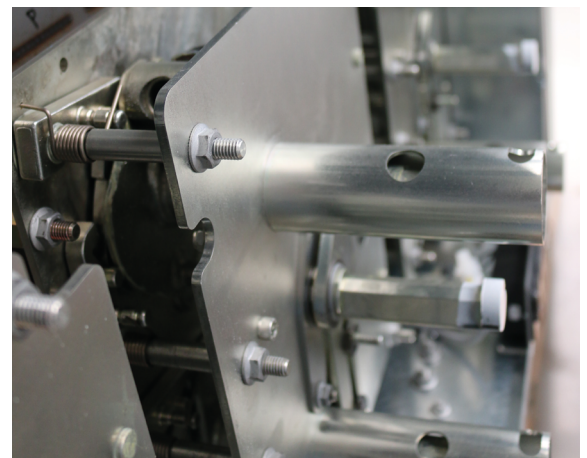
- Three phase three positions load break switch of the type RV50, class E3 according to IEC 62271-103
- Interlocked earthing switch with a making capacity up to max. 50 kÂ
- Bushing interface type C, according to DIN EN 50181
- Cable clamps for monopolar cable with section up to 240 mm²
- Door interlock
- Integrated voltage indicators of the type Mevoco HR-3
- LV compartment
- MV cable access door
- Floor panels
- Operating handle

Standard equipment for the T function :

- Three phase three positions load break switch/ fuse combination of the type RV50, according to IEC 62271-105
- 24 kV - 63 A - Icc 25 kA with making capacity of 63 kÂ
- Double interlocked earthing switch, with a making capacity up to 50 kÂ
- Fuse holder for HRC fuses :
 - e = 292 mm DIN 10 / 17.5 kV
 - e = 442 mm DIN 10 / 24 kV
 - e = 520 mm UTE 24 kV
- Three pole fuse trip in case of one fuse tripping
- Bushing interface type A, according to DIN EN 50181
- Switch off mechanism through hitting bolt
- Cable clamps for monopolar cable with section up to 95 mm²
- Door interlock
- Integrated voltage indicators of the type Mevoco HR-3
- LV compartment
- MV cable access door
- Floor panels

SPECIFICATIONS & DIMENSIONS :

Rated Voltage	kV	12	17,5	24/25
Rated current	A	630	630	630
Rated short term current	kA	21	21	21
Time of the rated short time current	s	3	3	3
Width	mm	1371	1371	1371
Depth	mm	860	860	860
Height	mm	1422	1422	1422
Height between bottom and bushing (K / T)	mm	745 / 325	745 / 325	745 / 325
Fuse size	mm	292 (DIN)	292 / 442 (DIN)	292 / 442 / 520 (DIN) / (UTE)
Weight	kg	630	630	630





Options for K and T function :

- Set of auxiliary contacts on the load break switch
- Set of auxiliary contacts on the earthing switch
- Key interlock on the load break switch
- Key interlock on the earthing switch
- Key interlock on both load break switch and earthing switch
- Motor operation on the load break switch : 24-48-110 V DC or 110-230 V AC
- Motor operation on the earthing switch : 24-48-110 V DC or 110-230 V AC
- No door interlock
- Short circuit indicator (to be specified by the customer)
- Cubicle base of a height of 200, 300, 400 mm (other dimensions on request)
- Push button control
- Remote control
- Arc-Killer SV-50
- Lateral extension
- Manometer
- Manometer with auxiliary contact
- Integrated voltage indicator of the type 'Kries Capdis S1+', 'Kries Capdis S2+', 'Horstmann type Wega 1.2C', 'Horstmann type Wega 2.2C'
- MV cable access door

Options for T function only :

- Tripping coil (24-48-110 V DC or 110-230 V AC)
- Time delayed/direct under voltage release (24-48-110 V DC or 110-230 V AC)
- Closing coil (24-48-110 V DC or 110-230 V AC)
- HRC fuses or spare fuse
- Fault indicator 'Fuse tripped'
- Fault contact 'Fuse tripped'
- Automatic reclosing
- Integrated windows

DR-6/DT-6 Key features :

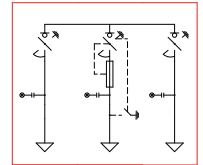
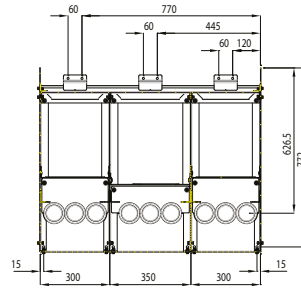
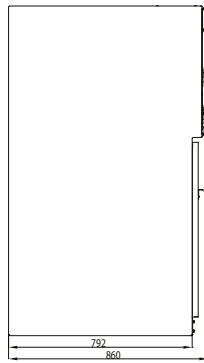
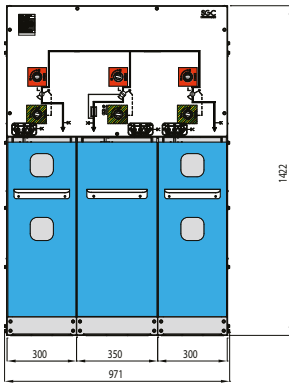
- Compact design
- Solid interlocks
- Ease of use
- No emission of SF₆ in case of internal arc due to the patented Arc-killer
- Long life expectancy



OTHER OPTIONS & DIMENSIONS ?

Please consult us for options and dimensions other than those mentioned in this catalogue.

DR-6C 2KT



Standard equipment for the K function :

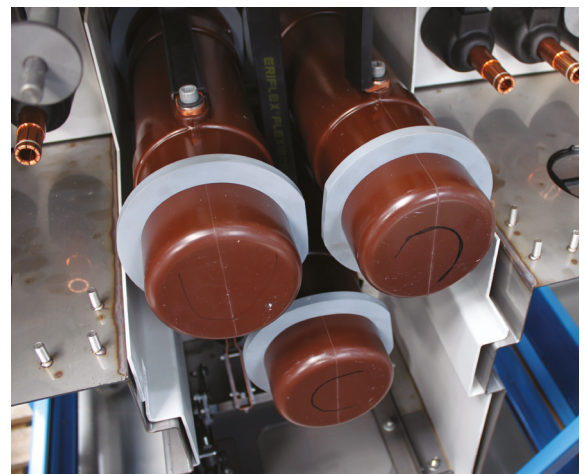
- Three phase three positions load break switch of the type RV50, class E3 according to IEC 62271-103
- Interlocked earthing switch with a making capacity up to max. 50 kA
- Bushing interface type C, according to DIN EN 50181
- Cable clamps for monopolar cable with section up to 240 mm²
- Door interlock
- Integrated voltage indicators of the type Mevoco HR-3
- LV compartment
- MV cable access door
- Floor panels
- Operating handle

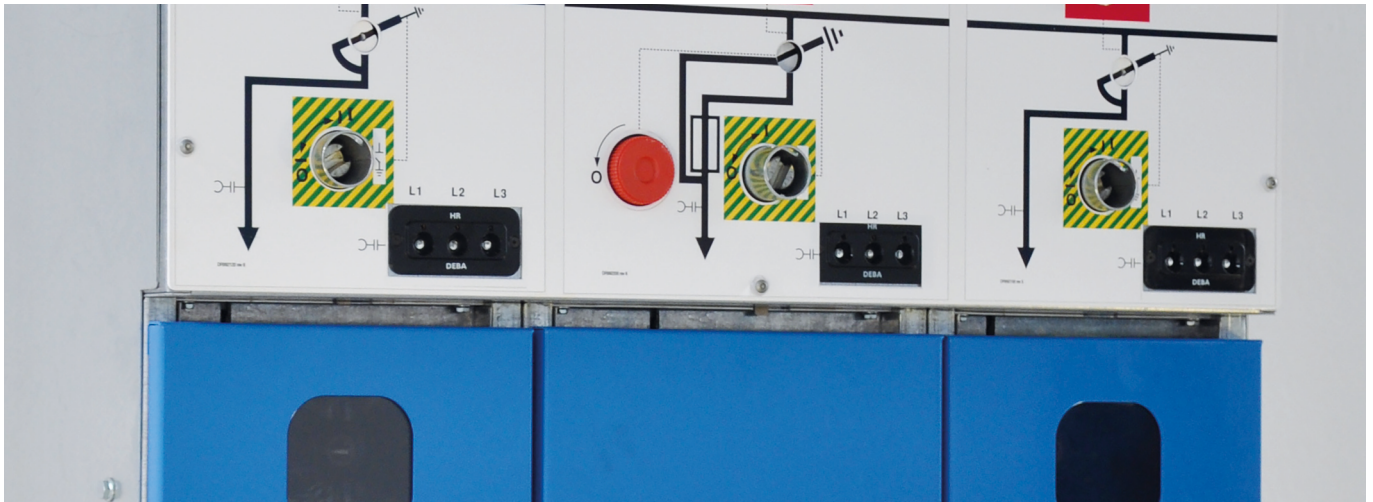
Standard equipment for the T function :

- Three phase three positions load break switch/ fuse combination of the type RV50, according to IEC 62271-105
- 24 kV - 63 A - Icc 25 kA with making capacity of 63 kA
- Double interlocked earthing switch, with a making capacity up to 50 kA
- Fuse holder for HRC fuses :
 - e = 292 mm DIN 10 / 17.5 kV
 - e = 442 mm DIN 10 / 24 kV
 - e = 520 mm UTE 24 kV
- Three pole fuse trip in case of one fuse tripping
- Bushing interface type A, according to DIN EN 50181
- Switch off mechanism through hitting bolt
- Cable clamps for monopolar cable with section up to 95 mm²
- Door interlock
- Integrated voltage indicators of the type Mevoco HR-3
- LV compartment
- MV cable access door
- Floor panels

SPECIFICATIONS & DIMENSIONS :

Rated Voltage	kV	12	17,5	24/25
Rated current	A	630	630	630
Rated short term current	kA	21	21	21
Time of the rated short time current	s	3	3	3
Width	mm	971	971	971
Depth	mm	860	860	860
Height	mm	1422	1422	1422
Height between bottom and bushing (K / T)	mm	745 / 325	745 / 325	745 / 325
Fuse size	mm	292 (DIN)	292 / 442 (DIN)	292 / 442 / 520 (DIN) / (UTE)
Weight	kg	400	400	400





Options for K and T function :

- Set of auxiliary contacts on the load break switch
- Set of auxiliary contacts on the earthing switch
- Key interlock on the load break switch
- Key interlock on the earthing switch
- Key interlock on both load break switch and earthing switch
- Motor operation on the load break switch : 24-48-110 V DC or 110-230 V AC
- Motor operation on the earthing switch : 24-48-110 V DC or 110-230 V AC
- No door interlock
- Short circuit indicator (to be specified by the customer)
- Cubicle base of a height of 200, 300, 400 mm (other dimensions on request)
- Push button control
- Remote control
- Arc-Killer SV-50
- Lateral extension
- Manometer
- Manometer with auxiliary contact
- Integrated voltage indicator of the type 'Kries Capdis S1+', 'Kries Capdis S2+', 'Horstmann type Wega 1.2C', 'Horstmann type Wega 2.2C'
- Integrated windows

Options for T function only :

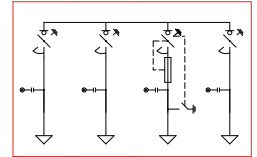
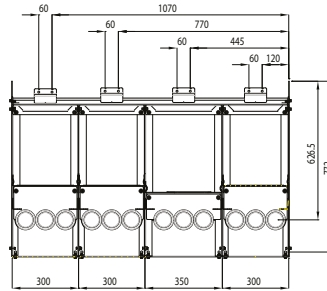
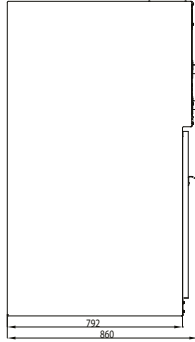
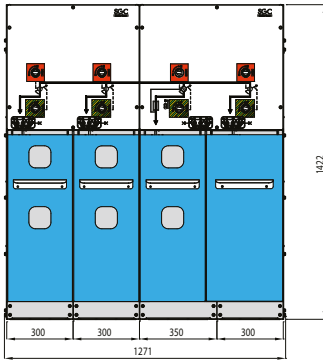
- Tripping coil (24-48-110 V DC or 110-230 V AC)
- Time delayed/direct under voltage release (24-48-110 V DC or 110-230 V AC)
- Closing coil (24-48-110 V DC or 110-230 V AC)
- HRC fuses or spare fuse
- Fault indicator 'Fuse tripped'
- Fault contact 'Fuse tripped'
- Automatic reclosing
- Integrated windows



OTHER OPTIONS & DIMENSIONS ?

Please consult us for options and dimensions other than those mentioned in this catalogue.

DR-6C 3KT



Standard equipment for the K function :

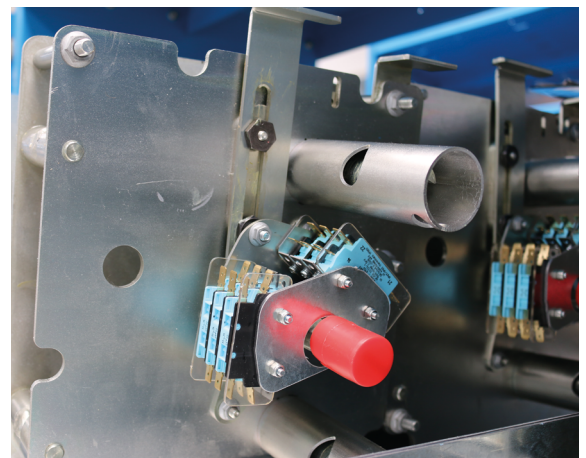
- Three phase three positions load break switch of the type RV50, class E3 according to IEC 62271-103
- Interlocked earthing switch with a making capacity up to max. 50 kA
- Bushing interface type C, according to DIN EN 50181
- Cable clamps for monopolar cable with section up to 240 mm²
- Door interlock
- Integrated voltage indicators of the type Mevoco HR-3
- LV compartment
- MV cable access door
- Floor panels
- Operating handle

Standard equipment for the T function :

- Three phase three positions load break switch/ fuse combination of the type RV50, according to IEC 62271-105
- 24 kV - 63 A - Icc 25 kA with making capacity of 63 kA
- Double interlocked earthing switch, with a making capacity up to 50 kA
- Fuse holder for HRC fuses :
 - e = 292 mm DIN 10 / 17.5 kV
 - e = 442 mm DIN 10 / 24 kV
 - e = 520 mm UTE 24 kV
- Three pole fuse trip in case of one fuse tripping
- Bushing interface type A, according to DIN EN 50181
- Switch off mechanism through hitting bolt
- Cable clamps for monopolar cable with section up to 95 mm²
- Door interlock
- Integrated voltage indicators of the type Mevoco HR-3
- LV compartment
- MV cable access door
- Floor panels

SPECIFICATIONS & DIMENSIONS :

Rated Voltage	kV	12	17,5	24/25
Rated current	A	630	630	630
Rated short term current	kA	21	21	21
Time of the rated short time current	s	3	3	3
Width	mm	1271	1271	1271
Depth	mm	860	860	860
Height	mm	1422	1422	1422
Height between bottom and bushing (K / T)	mm	745 / 325	745 / 325	745 / 325
Fuse size	mm	292 (DIN)	292 / 442 (DIN)	292 / 442 / 520 (DIN) / (UTE)
Weight	kg	600	600	600



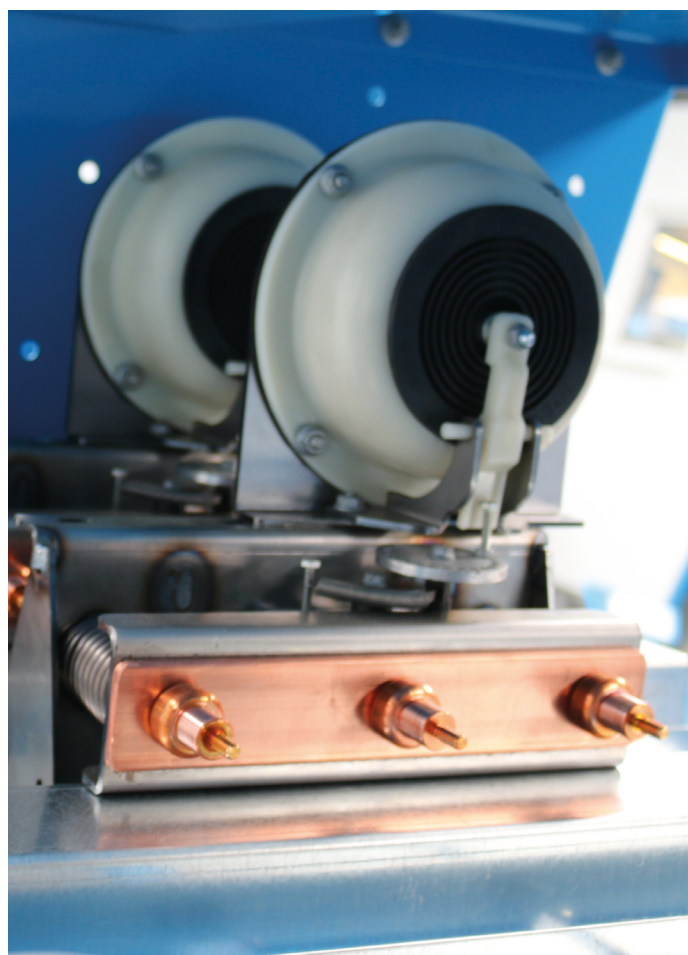


Options for K and T function :

- Set of auxiliary contacts on the load break switch
- Set of auxiliary contacts on the earthing switch
- Key interlock on the load break switch
- Key interlock on the earthing switch
- Key interlock on both load break switch and earthing switch
- Motor operation on the load break switch : 24-48-110 V DC or 110-230 V AC
- Motor operation on the earthing switch : 24-48-110 V DC or 110-230 V AC
- No door interlock
- Short circuit indicator (to be specified by the customer)
- Cubicle base of a height of 200, 300, 400 mm (other dimensions on request)
- Push button control
- Remote control
- Arc-Killer SV-50
- Lateral extension
- Manometer
- Manometer with auxiliary contact
- Integrated voltage indicator of the type 'Kries Capdis S1+', 'Kries Capdis S2+', 'Horstmann type Wega 1.2C', 'Horstmann type Wega 2.2C'
- Integrated windows

Options for T function only :

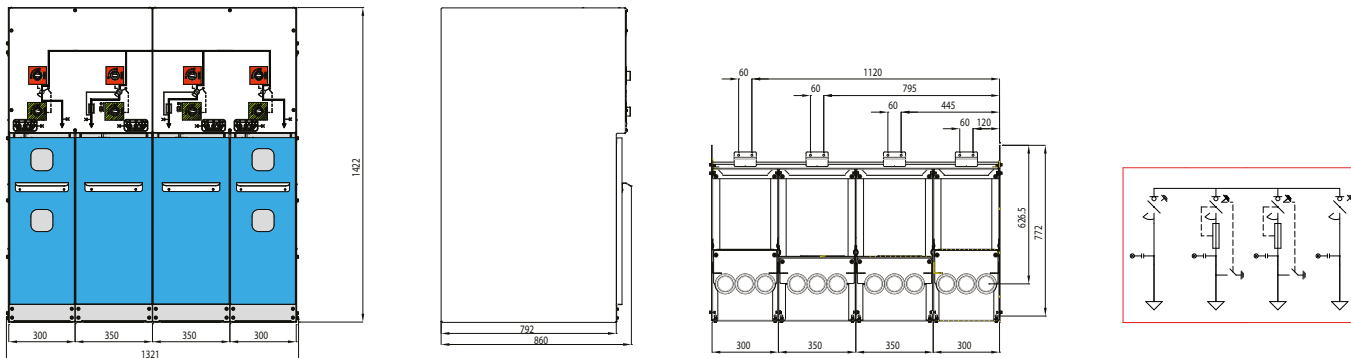
- Tripping coil (24-48-110 V DC or 110-230 V AC)
- Time delayed/direct under voltage release (24-48-110 V DC or 110-230 V AC)
- Closing coil (24-48-110 V DC or 110-230 V AC)
- HRC fuses or spare fuse
- Fault indicator 'Fuse tripped'
- Fault contact 'Fuse tripped'
- Automatic reclosing
- Integrated windows



OTHER OPTIONS & DIMENSIONS ?

Please consult us for options and dimensions other than those mentioned in this catalogue.

DR-6C 2K2T



Standard equipment for the K function :

- Three phase three positions load break switch of the type RV50, class E3 according to IEC 62271-103
- Interlocked earthing switch with a making capacity up to max. 50 kA
- Bushing interface type C, according to DIN EN 50181
- Cable clamps for monopolar cable with section up to 240 mm²
- Door interlock
- Integrated voltage indicators of the type Mevoco HR-3
- LV compartment
- MV cable access door
- Floor panels
- Operating handle

Standard equipment for the T function :

- Three phase three positions load break switch/fuse combination of the type RV50, according to IEC 62271-105
- 24 kV - 63 A - Icc 25 kA with making capacity of 63 kA
- Double interlocked earthing switch, with a making capacity up to 50 kA
- Fuse holder for HRC fuses :
 - e = 292 mm DIN 10 / 17.5 kV
 - e = 442 mm DIN 10 / 24 kV
 - e = 520 mm UTE 24 kV
- Three pole fuse trip in case of one fuse tripping
- Bushing interface type A, according to DIN EN 50181
- Switch off mechanism through hitting bolt
- Cable clamps for monopolar cable with section up to 95 mm²
- Door interlock
- Integrated voltage indicators of the type Mevoco HR-3
- LV compartment
- MV cable access door
- Floor panels

SPECIFICATIONS & DIMENSIONS :

Rated Voltage	kV	12	17,5	24/25
Rated current	A	630	630	630
Rated short term current	kA	21	21	21
Time of the rated short time current	s	3	3	3
Width	mm	1321	1321	1321
Depth	mm	860	860	860
Height	mm	1422	1422	1422
Height between bottom and bushing (K / T)	mm	745 / 325	745 / 325	745 / 325
Fuse size	mm	292 (DIN)	292 / 442 (DIN)	292 / 442 / 520 (DIN) / (UTE)
Weight	kg	640	640	640





Options for K and T function :

- Set of auxiliary contacts on the load break switch
- Set of auxiliary contacts on the earthing switch
- Key interlock on the load break switch
- Key interlock on the earthing switch
- Key interlock on both load break switch and earthing switch
- Motor operation on the load break switch : 24-48-110 V DC or 110-230 V AC
- Motor operation on the earthing switch : 24-48-110 V DC or 110-230 V AC
- No door interlock
- Short circuit indicator (to be specified by the customer)
- Cubicle base of a height of 200, 300, 400 mm (other dimensions on request)
- Push button control
- Remote control
- Arc-Killer SV-50
- Lateral extension
- Manometer
- Manometer with auxiliary contact
- Integrated voltage indicator of the type 'Kries Capdis S1+', 'Kries Capdis S2+', 'Horstmann type Wega 1.2C', 'Horstmann type Wega 2.2C'
- Integrated windows

Options for T function only :

- Tripping coil (24-48-110 V DC or 110-230 V AC)
- Time delayed/direct under voltage release (24-48-110 V DC or 110-230 V AC)
- Closing coil (24-48-110 V DC or 110-230 V AC)
- HRC fuses or spare fuse
- Fault indicator 'Fuse tripped'
- Fault contact 'Fuse tripped'
- Automatic reclosing
- Integrated windows

DR-6/DT-6 Key features :

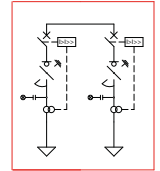
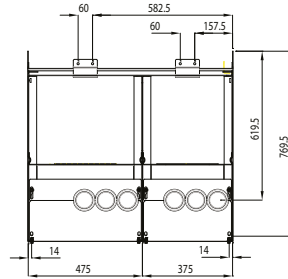
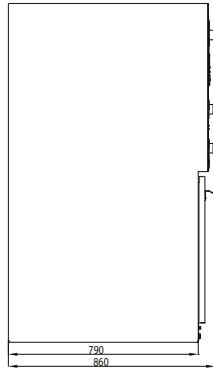
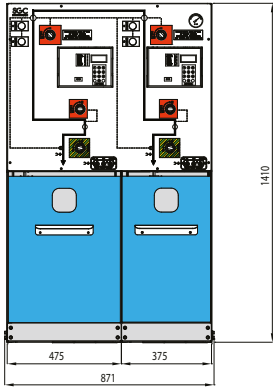
- Compact design
- Solid interlocks
- Ease of use
- No emission of SF₆ in case of internal arc due to the patented Arc-killer
- Long life expectancy



OTHER OPTIONS & DIMENSIONS ?

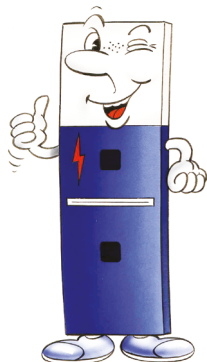
Please consult us for options and dimensions other than those mentioned in this catalogue.

DT-6C 2D



Standard equipment :

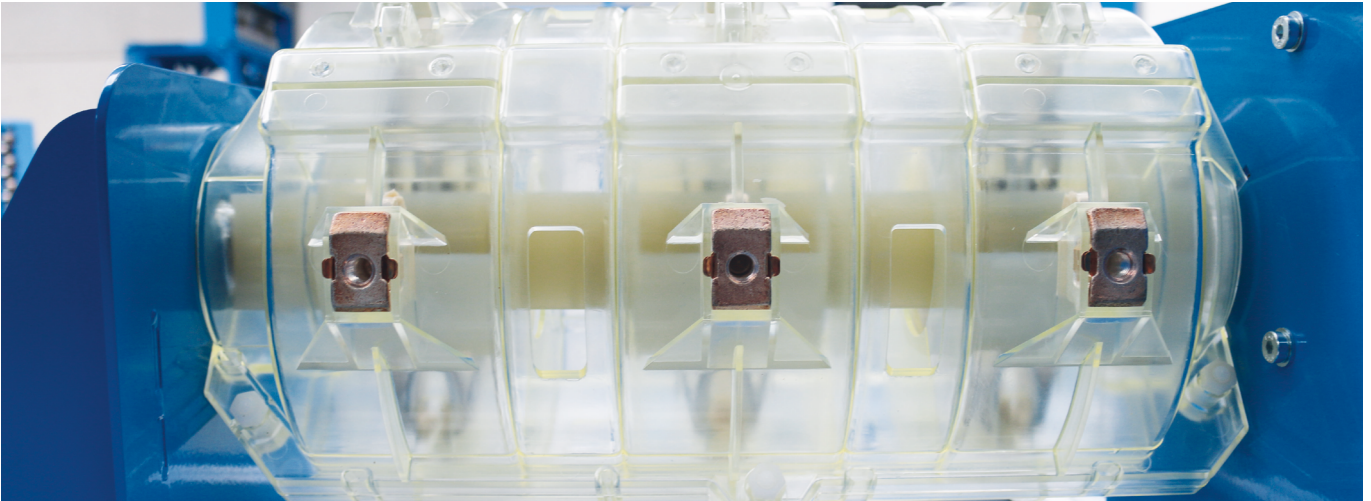
- Three pole vacuum circuit breaker of the type ISM, class E2, M2 according to IEC 62271-100, equipped with a magnetic actuator and integrated digital protection relay of the type RP600
- Three phase multiple rating current transformer (50-150-200-400-600/1 // 2.5 VA – cl. 10P4-5P4-5P4-5P4), integrated in the cable compartment
- Three phase three position load break switch of the type RV50, class E3 according to IEC 62271-103
- Earthing switch with a making capacity of 50 kÂ, downstream of the circuit breaker interlocked with the load break switch
- Bushing interface type C, according to DIN EN 50181
- Cable clamps for monopolar cable with section up to 240 mm²
- Door interlock
- Integrated voltage indicators of the type Mevoco HR-3
- LV compartment
- MV cable access door
- Floor panels
- Operating handle



SPECIFICATIONS & DIMENSIONS :

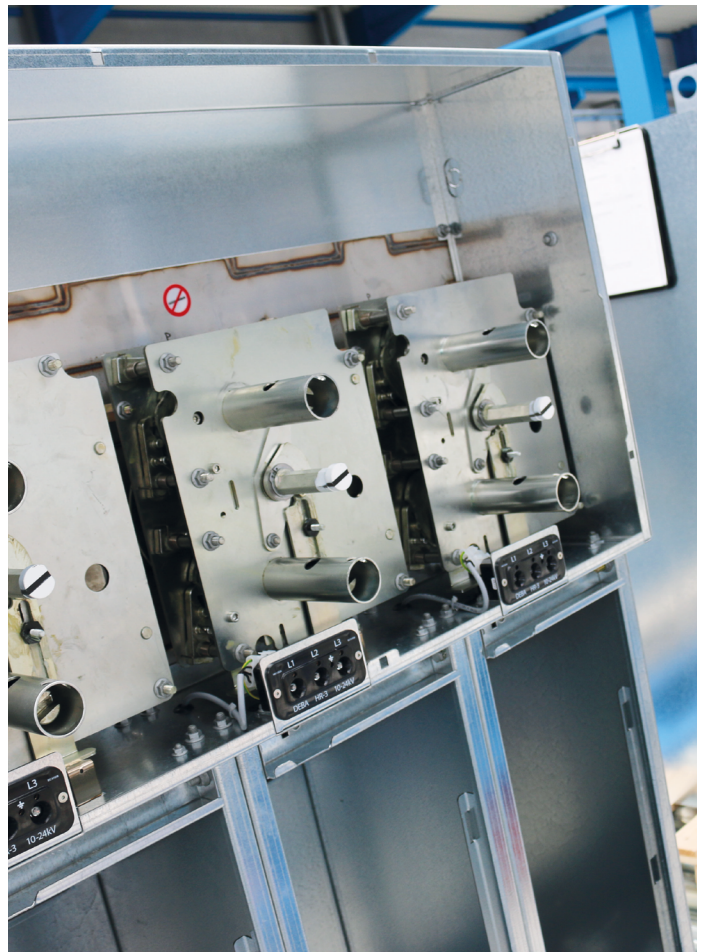
Rated Voltage	kV	12	17,5	24/25
Rated current	A	630	630	630
Rated short term current	kA	20	20	16
Time of the rated short time current	s	3	3	3
Width	mm	871	871	871
Depth	mm	860	860	860
Height	mm	1410	1410	1410
Height between bottom and bushing	mm	537	537	537
Weight	kg	450	450	450





Options :

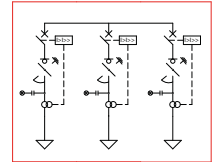
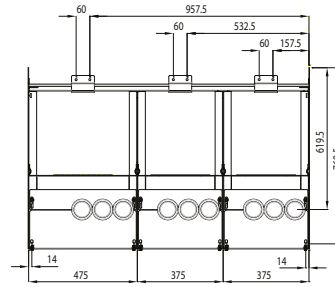
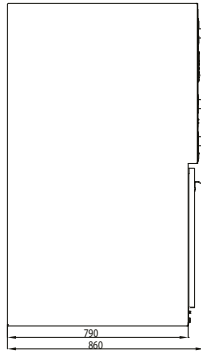
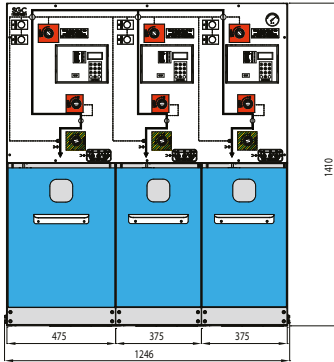
- Set of auxiliary contacts on the load break switch
- Set of auxiliary contacts on the earthing switch
- Set of auxiliary contacts on the circuit breaker
- Key interlock on the load break switch
- Key interlock on the earthing switch
- Key interlock on both load break switch and earthing switch
- No door interlock
- Motor operation of the load break switch : 24-48-110 V DC or 110-230 V AC
- Motor operation on the earthing switch : 24-48-110 V DC or 110-230 V AC
- Short circuit indicator (to be specified by the customer)
- Cubicle base of a height of 200, 300, 400 mm (other dimensions on request)
- Push button operation on the load break switch
- Remote control on the load break switch
- Push button control on the circuit breaker
- Remote control on the circuit breaker
- Arc-Killer SV-50
- Lateral extension
- Manometer
- Manometer with auxiliary contact
- Integrated voltage indicator of the type 'Kries Capdis S1+', 'Kries Capdis S2+', 'Horstmann type Wega 1.2C', 'Horstmann type Wega 2.2C'
- Automatic opening and closing by means of a control module : 24-60V DC or 110-230 V AC
- Time delayed / direct under voltage function by means of an auxiliary relay : 24-48-110 V DC or 110-230 V AC
- Protection relay specified by customer
- Automatic reclosing
- Integrated windows



OTHER OPTIONS & DIMENSIONS ?

Please consult us for options and dimensions other than those mentioned in this catalogue.

DT-6C 3D



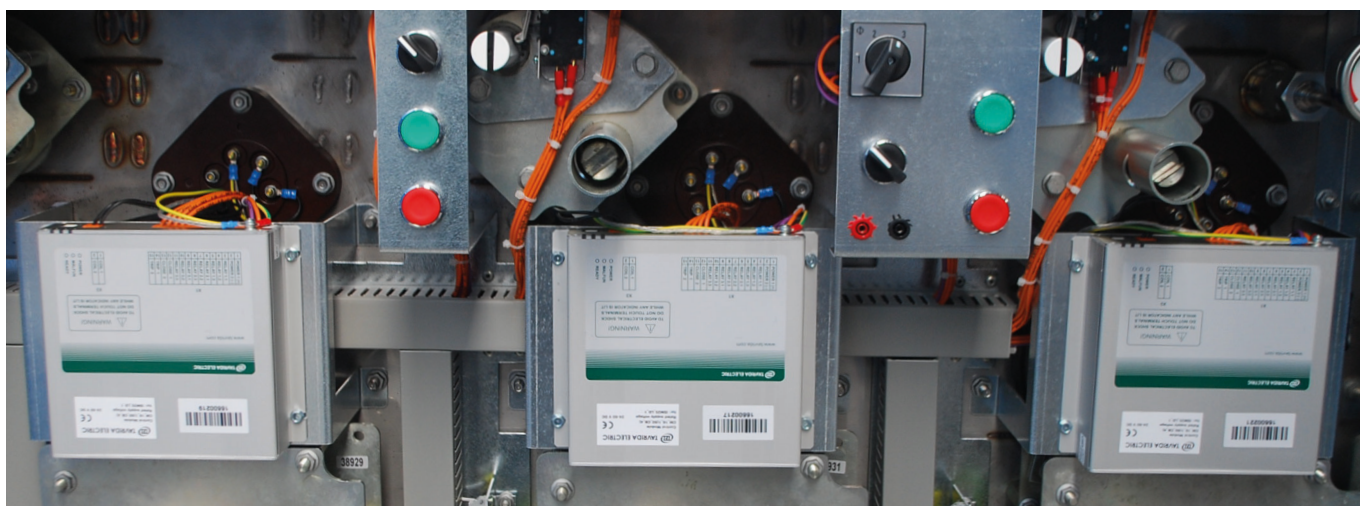
Standard equipment :

- Three pole vacuum circuit breaker of the type ISM, class E2, M2 according to IEC 62271-100, equipped with a magnetic actuator and integrated digital protection relay of the type RP600
- Three phase multiple rating current transformer (50-150-200-400-600/1 // 2.5 VA – cl. 10P4-5P4-5P4-5P4), integrated in the cable compartment
- Three phase three position load break switch of the type RV50, class E3 according to IEC 62271-103
- Earthing switch with a making capacity of 50 kÂ, downstream of the circuit breaker interlocked with the load break switch
- Bushing interface type C, according to DIN EN 50181
- Cable clamps for monopolar cable with section up to 240 mm²
- Door interlock
- Integrated voltage indicators of the type Mevoco HR-3
- LV compartment
- MV cable access door
- Floor panels
- Operating handle

SPECIFICATIONS & DIMENSIONS :

Rated Voltage	kV	12	17,5	24
Rated current	A	630	630	630
Rated short term current	kA	20	20	16
Time of the rated short time current	s	3	3	3
Width	mm	1246	1246	1246
Depth	mm	860	860	860
Height	mm	1410	1410	1410
Height between bottom and bushing	mm	537	537	537
Weight	kg	675	675	675





Options :

- Set of auxiliary contacts on the load break switch
- Set of auxiliary contacts on the earthing switch
- Set of auxiliary contacts on the circuit breaker
- Key interlock on the load break switch
- Key interlock on the earthing switch
- Key interlock on both load break switch and earthing switch
- No door interlock
- Motor operation of the load break switch : 24-48-110 V DC or 110-230 V AC
- Motor operation on the earthing switch : 24-48-110 V DC or 110-230 V AC
- Short circuit indicator (to be specified by the customer)
- Cubicle base of a height of 200, 300, 400 mm (other dimensions on request)
- Push button operation on the load break switch
- Remote control on the load break switch
- Push button control on the circuit breaker
- Remote control on the circuit breaker
- Arc-Killer SV-50
- Lateral extension
- Manometer
- Manometer with auxiliary contact
- Integrated voltage indicator of the type 'Kries Capdis S1+', 'Kries Capdis S2+', 'Horstmann type Wega 1.2C', 'Horstmann type Wega 2.2C'
- Automatic opening and closing by means of a control module : 24-60V DC or 110-230 V AC
- Time delayed / direct under voltage function by means of an auxiliary relay : 24-48-110 V DC or 110-230 V AC
- Protection relay specified by customer
- Automatic reclosing
- Integrated windows

DR-6/DT-6 Key features :

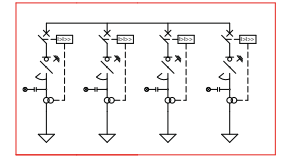
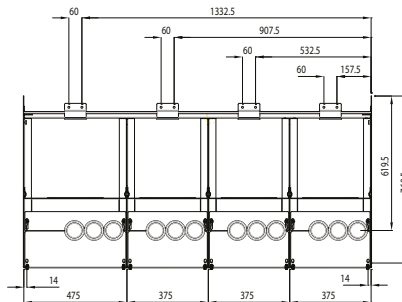
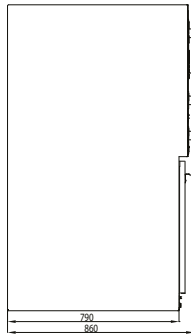
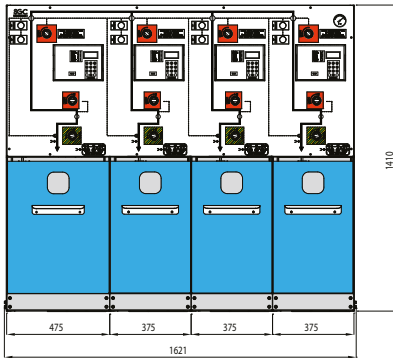
- **Compact design**
- **Solid interlocks**
- **Ease of use**
- **No emission of SF₆ in case of internal arc due to the patented Arc-killer**
- **Long life expectancy**



OTHER OPTIONS & DIMENSIONS?

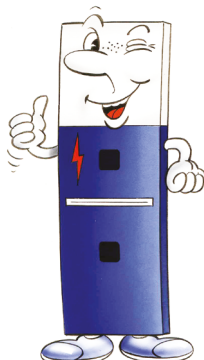
Please consult us for options and dimensions other than those mentioned in this catalogue.

DT-6C 4D



Standard equipment :

- Three pole vacuum circuit breaker of the type ISM, class E2, M2 according to IEC 62271-100, equipped with a magnetic actuator and integrated digital protection of the type RP600
- Three phase multiple rating current transformer (50-150-200-400-600/1 // 2.5 VA – cl. 10P4-5P4-5P4-5P4), integrated in the cable compartment
- Three phase three position load break switch of the type RV50, class E3 according to IEC 62271-103
- Earthing switch with a making capacity of 50 kÂ, downstream of the circuit breaker interlocked with the load break switch
- Bushing interface type C, according to DIN EN 50181
- Cable clamps for monopolar cable with section up to 240 mm²
- Door interlock
- Integrated voltage indicators of the type Mevoco HR-3
- LV compartment
- MV cable access door
- Floor panels
- Operating handle



SPECIFICATIONS & DIMENSIONS :

Rated Voltage	kV	12	17,5	24
Rated current	A	630	630	630
Rated short term current	kA	20	20	16
Time of the rated short time current	s	3	3	3
Width	mm	1621	1621	1621
Depth	mm	860	860	860
Height	mm	1410	1410	1410
Height between bottom and bushing	mm	537	537	537
Weight	kg	900	900	900





Options :

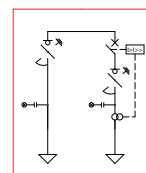
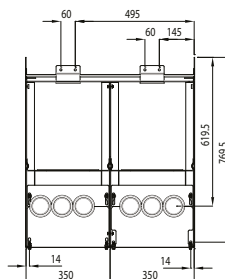
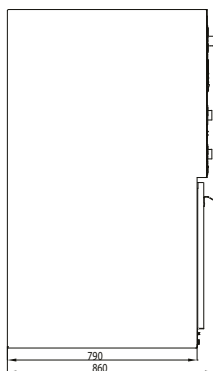
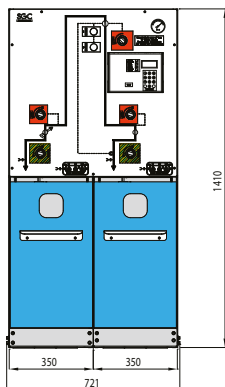
- Set of auxiliary contacts on the load break switch
- Set of auxiliary contacts on the earthing switch
- Set of auxiliary contacts on the circuit breaker
- Key interlock on the load break switch
- Key interlock on the earthing switch
- Key interlock on both load break switch and earthing switch
- No door interlock
- Motor operation of the load break switch : 24-48-110 V DC or 110-230 V AC
- Motor operation on the earthing switch : 24-48-110 V DC or 110-230 V AC
- Short circuit indicator (to be specified by the customer)
- Cubicle base of a height of 200, 300, 400 mm (other dimensions on request)
- Push button operation on the load break switch
- Remote control on the load break switch
- Push button control on the circuit breaker
- Remote control on the circuit breaker
- Arc-Killer SV-50
- Lateral extension
- Manometer
- Manometer with auxiliary contact
- Integrated voltage indicator of the type 'Kries Capdis S1+', 'Kries Capdis S2+', 'Horstmann type Wega 1.2C', 'Horstmann type Wega 2.2C'
- Automatic opening and closing by means of a control module : 24-60V DC or 110-230 V AC
- Time delayed / direct under voltage function by means of an auxiliary relay : 24-48-110 V DC or 110-230 V AC
- Protection relay specified by customer
- Automatic reclosing
- Integrated windows



OTHER OPTIONS & DIMENSIONS ?

Please consult us for options and dimensions other than those mentioned in this catalogue.

DT-6C KD



Standard equipment for the K function :

- Three phase three position load break switch of the type RV50, class E3 according to IEC 62271-103
- Interlocked earthing switch with a making capacity up to max. 50 kA
- Bushing type interface C, according to DIN EN 50181
- Cable clamps for monopolar cable with section up to 240 mm²
- Door interlock
- Integrated voltage indicators of the type Mevoco HR-3
- LV compartment
- MV cable access door
- Floor panels
- Operating handle

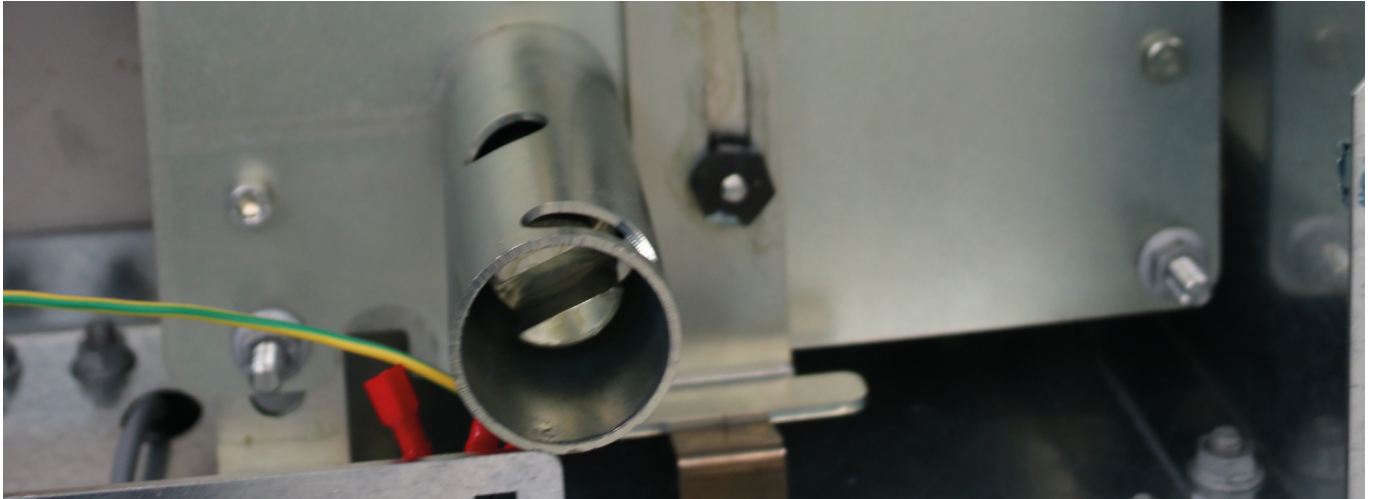
Standard equipment for the D function :

- Three pole vacuum circuit breaker of the type ISM, class E2, M2 according to IEC 62271-100, equipped with a magnetic actuator and integrated digital protection of the type RP-600
- Three phase multiple rating current transformer (50-150-200-400-600/1 // 2.5 VA – cl. 10P4-5P4-5P4-5P4), integrated in the cable compartment
- Three phase three position load break switch of the type RV50, class E3 according to IEC 62271-103
- Earthing switch with a making capacity of 50 kA, downstream of the circuit breaker interlocked with the load break switch
- Bushing type interface C, according to DIN EN 50181
- Cable clamps for monopolar cable with section up to 240 mm²
- Door interlock
- Integrated voltage indicators of the type Mevoco HR-3
- LV compartment
- MV cable access door
- Floor panels

SPECIFICATIONS & DIMENSIONS :

Rated Voltage	kV	12	17,5	24
Rated current	A	630	630	630
Rated short term current	kA	20	20	16
Time of the rated short time current	s	3	3	3
Width	mm	721	721	721
Depth	mm	860	860	860
Height	mm	1410	1410	1410
Height between bottom and bushing (K / D)	mm	745 / 537	745 / 537	745 / 537
Weight	kg	300	300	300





Options for K and D function :

- Set of auxiliary contacts on the load break switch
- Set of auxiliary contacts on the earthing switch
- Key interlock on the load break switch
- Key interlock on the earthing switch
- Key interlock on both load break and earthing switch
- No door interlock
- Motor operation on the load break switch : 24-48-110 V DC or 110-230 V AC
- Motor operation on the earthing switch : 24-48-110 V DC or 110-230 V AC
- Short circuit indicator (to be specified by the customer)
- Cubicle base of a height of 200, 300, 400 mm (other dimensions on request)
- Push button control on the load break switch
- Remote control on the load break switch
- Arc-Killer SV-50
- Lateral extension
- Manometer with or without auxiliary contact
- Integrated voltage indicator of the type 'Kries Capdis S1+', 'Kries Capdis S2+', 'Horstmann type Wega 1.2C', 'Horstmann type Wega 2.2C'
- Integrated windows

Options for D function only :

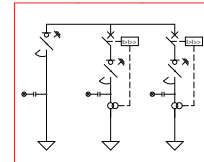
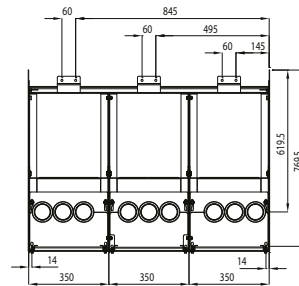
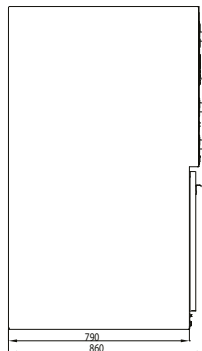
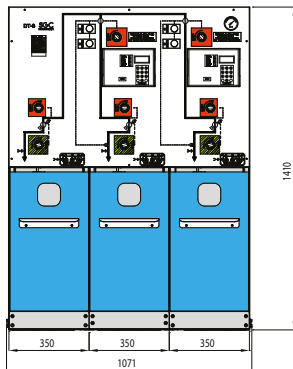
- Set of auxiliary contacts on the circuit breaker
- Push button control on the circuit breaker
- Remote control on the circuit breaker
- Automatic opening and closing by means of a control module : 24-60V DC or 110-230 V AC
- Time delayed / direct under voltage function by means of an auxiliary relay : 24-48-110 V DC or 110-230 V AC
- Protection relay specified by customer
- Test feeding for integrated protection relay (battery bloc)
- Automatic reclosing
- Integrated windows



OTHER OPTIONS & DIMENSIONS ?

Please consult us for options and dimensions other than those mentioned in this catalogue.

DT-6C K2D



Standard equipment for the K function :

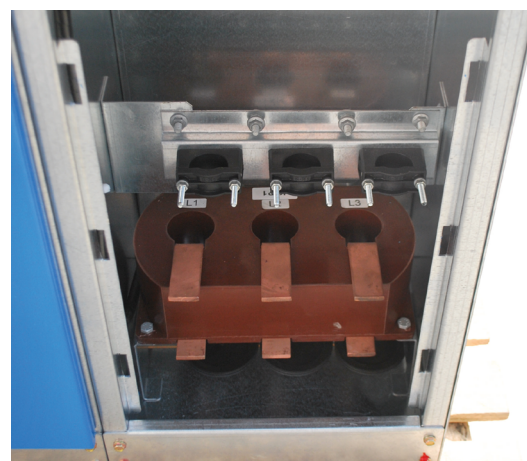
- Three phase three position load break switch of the type RV50, class E3 according to IEC 62271-103
- Interlocked earthing switch with a making capacity up to max. 50 kA
- Bushing type interface C, according to DIN EN 50181
- Cable clamps for monopolar cable with section up to 240 mm²
- Door interlock
- Integrated voltage indicators of the type Mevoco HR-3
- LV compartment
- MV cable access door
- Floor panels
- Operating handle

Standard equipment for the D function :

- Three pole vacuum circuit breaker of the type ISM, class E2, M2 according to IEC 62271-100, equipped with a magnetic actuator and integrated digital protection of the type RP600
- Three phase multiple rating current transformer (50-150-200-400-600/1 // 2.5 VA – cl. 10P4-5P4-5P4-5P4), integrated in the cable compartment
- Three phase three position load break switch of the type RV50, class E3 according to IEC 62271-103
- Earthing switch with a making capacity of 50 kA, downstream of the circuit breaker interlocked with the load break switch
- Bushing type interface C, according to DIN EN 50181
- Cable clamps for monopolar cable with section up to 240 mm²
- Door interlock
- Integrated voltage indicators of the type Mevoco HR-3
- LV compartment
- MV cable access door
- Floor panels

SPECIFICATIONS & DIMENSIONS :

Rated Voltage	kV	12	17,5	24
Rated current	A	630	630	630
Rated short term current	kA	20	20	16
Time of the rated short time current	s	3	3	3
Width	mm	1071	1071	1071
Depth	mm	860	860	860
Height	mm	1410	1410	1410
Height between bottom and bushing (K / D)	mm	745 / 537	745 / 537	745 / 537
Weight	kg	550	550	550





Options for K and D function :

- Set of auxiliary contacts on the load break switch
- Set of auxiliary contacts on the earthing switch
- Key interlock on the load break switch
- Key interlock on the earthing switch
- Key interlock on both load break and earthing switch
- No door interlock
- Motor operation on the load break switch : 24-48-110 V DC or 110-230 V AC
- Motor operation on the earthing switch : 24-48-110 V DC or 110-230 V AC
- Short circuit indicator (to be specified by the customer)
- Cubicle base of a height of 200, 300, 400 mm (other dimensions on request)
- Push button control on the load break switch
- Remote control on the load break switch
- Arc-Killer SV-50
- Lateral extension
- Manometer with or without auxiliary contact
- Integrated voltage indicator of the type 'Kries Capdis S1+', 'Kries Capdis S2+', 'Horstmann type Wega 1.2C', 'Horstmann type Wega 2.2C'
- Integrated windows

Options for D function only :

- Set of auxiliary contacts on the circuit breaker
- Push button control on the circuit breaker
- Remote control on the circuit breaker
- Automatic opening and closing by means of a control module : 24-60V DC or 110-230 V AC
- Time delayed / direct under voltage function by means of an auxiliary relay : 24-48-110 V DC or 110-230 V AC
- Protection relay specified by customer
- Test feeding for integrated protection relay (battery bloc)
- Automatic reclosing
- Integrated windows

DR-6/DT-6 Key features :

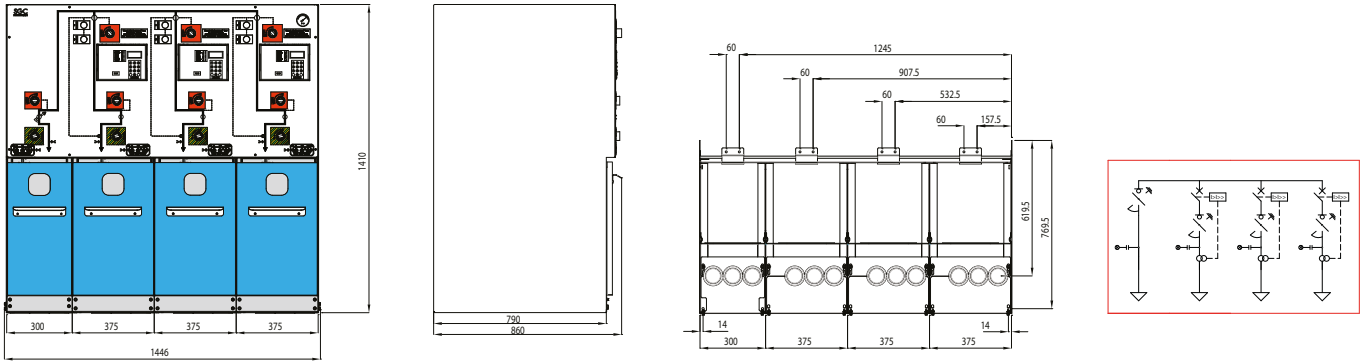
- Compact design
- Solid interlocks
- Ease of use
- No emission of SF₆ in case of internal arc due to the patented Arc-killer
- Long life expectancy



OTHER OPTIONS & DIMENSIONS ?

Please consult us for options and dimensions other than those mentioned in this catalogue.

DT-6C K3D



Standard equipment for the K function :

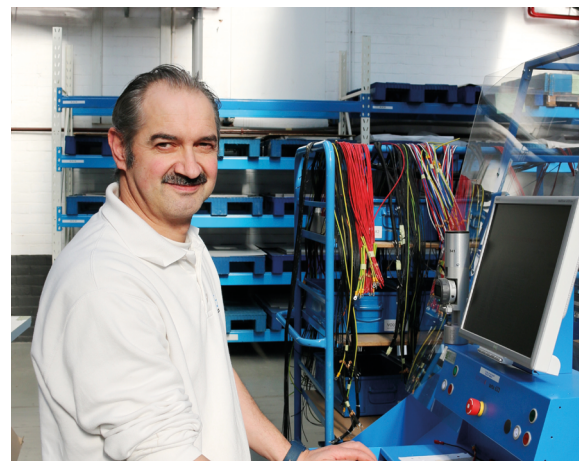
- Three phase three position load break switch of the type RV50, class E3 according to IEC 62271-103
- Interlocked earthing switch with a making capacity up to max. 50 kA
- Bushing type interface C, according to DIN EN 50181
- Cable clamps for monopolar cable with section up to 240 mm²
- Door interlock
- Integrated voltage indicators of the type Mevoco HR-3
- LV compartment
- MV cable access door
- Floor panels
- Operating handle

Standard equipment for the D function :

- Three pole vacuum circuit breaker of the type ISM, class E2, M2 according to IEC 62271-100, equipped with a magnetic actuator and integrated digital protection of the type RP600
- Three phase multiple rating current transformer (50-150-200-400-600/1 // 2.5 VA – cl. 10P4-5P4-5P4-5P4-5P4), integrated in the cable compartment
- Three phase three position load break switch of the type RV50, class E3 according to IEC 62271-103
- Earthing switch with a making capacity of 50 kA, downstream of the circuit breaker interlocked with the load break switch
- Bushing type interface C, according to DIN EN 50181
- Cable clamps for monopolar cable with section up to 240 mm²
- Door interlock
- Integrated voltage indicators of the type Mevoco HR-3
- LV compartment
- MV cable access door
- Floor panels

SPECIFICATIONS & DIMENSIONS :

Rated Voltage	kV	12	17,5	24
Rated current	A	630	630	630
Rated short term current	kA	20	20	16
Time of the rated short time current	s	3	3	3
Width	mm	1446	1446	1446
Depth	mm	860	860	860
Height	mm	1410	1410	1410
Height between bottom and bushing (K / D)	mm	745 / 537	745 / 537	475 / 537
Weight	kg	775	775	775





Options for K and D function :

- Set of auxiliary contacts on the load break switch
- Set of auxiliary contacts on the earthing switch
- Key interlock on the load break switch
- Key interlock on the earthing switch
- Key interlock on both load break and earthing switch
- No door interlock
- Motor operation on the load break switch : 24-48-110 V DC or 110-230 V AC
- Motor operation on the earthing switch : 24-48-110 V DC or 110-230 V AC
- Short circuit indicator (to be specified by the customer)
- Cubicle base of a height of 200, 300, 400 mm (other dimensions on request)
- Push button control on the load break switch
- Remote control on the load break switch
- Arc-Killer SV-50
- Lateral extension
- Manometer with or without auxiliary contact
- Integrated voltage indicator of the type 'Kries Capdis S1+', 'Kries Capdis S2+', 'Horstmann type Wega 1.2C', 'Horstmann type Wega 2.2C'
- Integrated windows

Options for D function only :

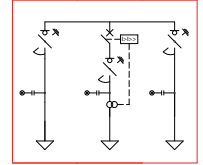
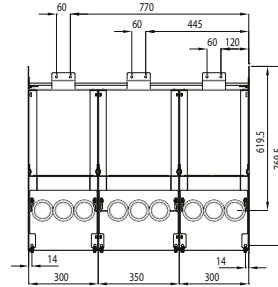
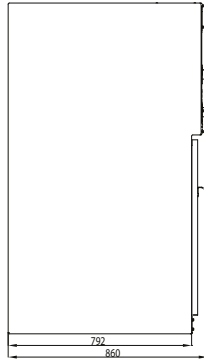
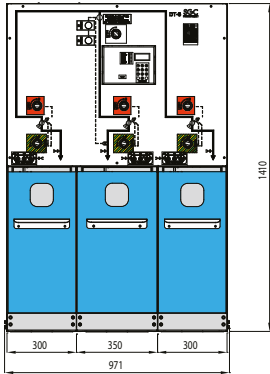
- Set of auxiliary contacts on the circuit breaker
- Push button control on the circuit breaker
- Remote control on the circuit breaker
- Automatic opening and closing by means of a control module : 24-60V DC or 110-230 V AC
- Time delayed / direct under voltage function by means of an auxiliary relay : 24-48-110 V DC or 110-230 V AC
- Protection relay specified by customer
- Test feeding for integrated protection relay (battery bloc)
- Automatic reclosing
- Integrated windows



OTHER OPTIONS & DIMENSIONS ?

Please consult us for options and dimensions other than those mentioned in this catalogue.

DT-6C 2KD



Standard equipment for the K function :

- Three phase three position load break switch of the type RV50, class E3 according to IEC 62271-103
- Interlocked earthing switch with a making capacity up to max. 50 kA
- Bushing type interface C, according to DIN EN 50181
- Cable clamps for monopolar cable with section up to 240 mm²
- Door interlock
- Integrated voltage indicators of the type Mevoco HR-3
- LV compartment
- MV cable access door
- Floor panels
- Operating handle

Standard equipment for the D function :

- Three pole vacuum circuit breaker of the type ISM, class E2, M2 according to IEC 62271-100, equipped with a magnetic actuator and integrated digital protection of the type RP600
- Three phase multiple rating current transformer (50-150-200-400-600/1 // 2.5 VA – cl. 10P4-5P4-5P4-5P4), integrated in the cable compartment
- Three phase three position load break switch of the type RV50, class E3 according to IEC 62271-103
- Earthing switch with a making capacity of 50 kA, downstream of the circuit breaker interlocked with the load break switch
- Bushing type interface C, according to DIN EN 50181
- Cable clamps for monopolar cable with section up to 240 mm²
- Door interlock
- Integrated voltage indicators of the type Mevoco HR-3
- LV compartment
- MV cable access door
- Floor panels

SPECIFICATIONS & DIMENSIONS :

Rated Voltage	kV	12	17,5	24
Rated current	A	630	630	630
Rated short term current	kA	20	20	16
Time of the rated short time current	s	3	3	3
Width	mm	971	971	971
Depth	mm	860	860	860
Height	mm	1410	1410	1410
Height between bottom and bushing (K / D)	mm	745 / 537	745 / 537	475 / 537
Weight	kg	400	400	400





Options for K and D function :

- Set of auxiliary contacts on the load break switch
- Set of auxiliary contacts on the earthing switch
- Key interlock on the load break switch
- Key interlock on the earthing switch
- Key interlock on both load break and earthing switch
- No door interlock
- Motor operation on the load break switch : 24-48-110 V DC or 110-230 V AC
- Motor operation on the earthing switch : 24-48-110 V DC or 110-230 V AC
- Short circuit indicator (to be specified by the customer)
- Cubicle base of a height of 200, 300, 400 mm (other dimensions on request)
- Push button control on the load break switch
- Remote control on the load break switch
- Arc-Killer SV-50
- Lateral extension
- Manometer with or without auxiliary contact
- Integrated voltage indicator of the type 'Kries Capdis S1+', 'Kries Capdis S2+', 'Horstmann type Wega 1.2C', 'Horstmann type Wega 2.2C'
- Integrated windows

Options for D function only :

- Set of auxiliary contacts on the circuit breaker
- Push button control on the circuit breaker
- Remote control on the circuit breaker
- Automatic opening and closing by means of a control module : 24-60V DC or 110-230 V AC
- Time delayed / direct under voltage function by means of an auxiliary relay : 24-48-110 V DC or 110-230 V AC
- Protection relay specified by customer
- Test feeding for integrated protection relay (battery bloc)
- Automatic reclosing
- Integrated windows

DR-6/DT-6 Key features :

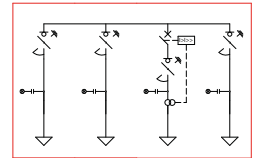
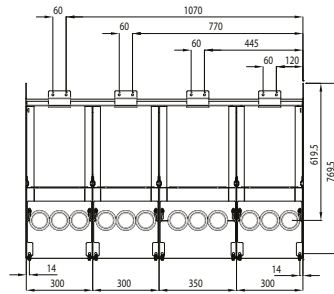
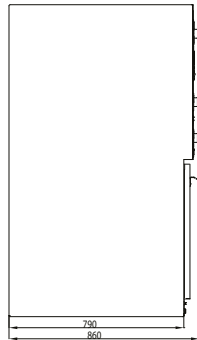
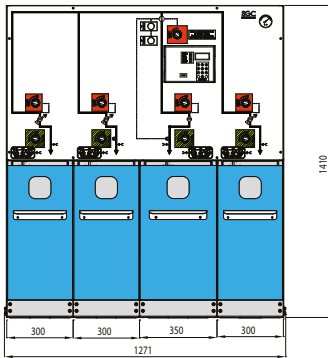
- Compact design
- Solid interlocks
- Ease of use
- No emission of SF₆ in case of internal arc due to the patented Arc-killer
- Long life expectancy



OTHER OPTIONS & DIMENSIONS ?

Please consult us for options and dimensions other than those mentioned in this catalogue.

DT-6C 3KD



Standard equipment for the K function :

- Three phase three position load break switch of the type RV50, class E3 according to IEC 62271-103
- Interlocked earthing switch with a making capacity up to max. 50 kA
- Bushing type interface C, according to DIN EN 50181
- Cable clamps for monopolar cable with section up to 240 mm²
- Door interlock
- Integrated voltage indicators of the type Mevoco HR-3
- LV compartment
- MV cable access door
- Floor panels
- Operating handle

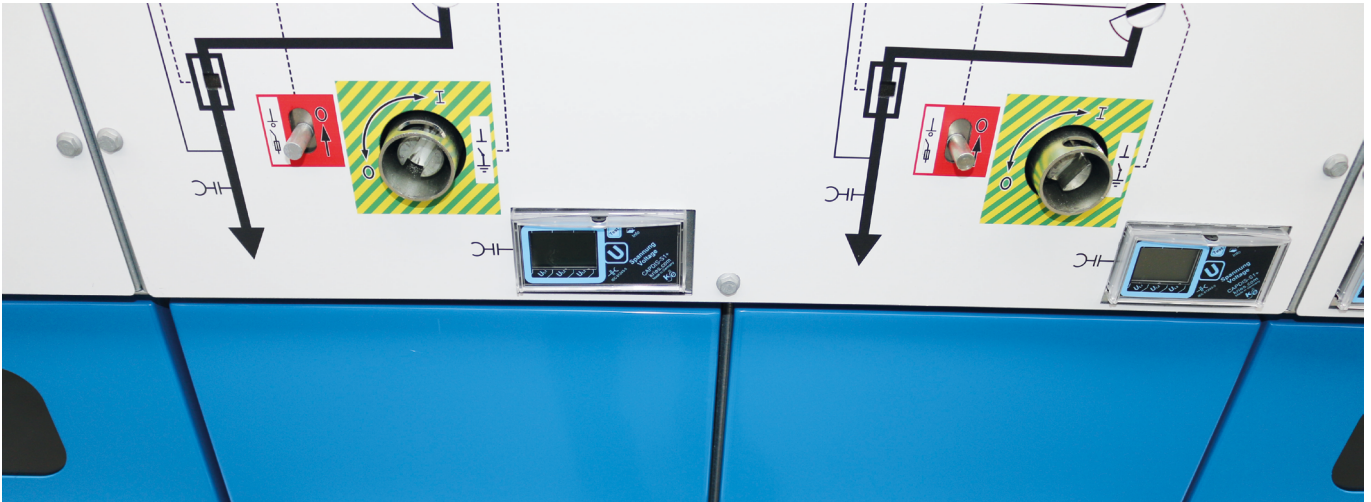
Standard equipment for the D function :

- Three pole vacuum circuit breaker of the type ISM, class E2, M2 according to IEC 62271-100, equipped with a magnetic actuator and integrated digital protection of the type RP600
- Three phase multiple rating current transformer (50-150-200-400-600/1 // 2.5 VA – cl. 10P4-5P4-5P4-5P4-5P4), integrated in the cable compartment
- Three phase three position load break switch of the type RV50, class E3 according to IEC 62271-103
- Earthing switch with a making capacity of 50 kA, downstream of the circuit breaker interlocked with the load break switch
- Bushing type interface C, according to DIN EN 50181
- Cable clamps for monopolar cable with section up to 240 mm²
- Door interlock
- Integrated voltage indicators of the type Mevoco HR-3
- LV compartment
- MV cable access door
- Floor panels

SPECIFICATIONS & DIMENSIONS :

Rated Voltage	kV	12	17,5	24
Rated current	A	630	630	630
Rated short term current	kA	20	20	16
Time of the rated short time current	s	3	3	3
Width	mm	1271	1271	1271
Depth	mm	860	860	860
Height	mm	1410	1410	1410
Height between bottom and bushing (K / D)	mm	745 / 537	745 / 537	475 / 537
Weight	kg	505	505	505





Options for K and D function :

- Set of auxiliary contacts on the load break switch
- Set of auxiliary contacts on the earthing switch
- Key interlock on the load break switch
- Key interlock on the earthing switch
- Key interlock on both load break and earthing switch
- No door interlock
- Motor operation on the load break switch : 24-48-110 V DC or 110-230 V AC
- Motor operation on the earthing switch : 24-48-110 V DC or 110-230 V AC
- Short circuit indicator (to be specified by the customer)
- Cubicle base of a height of 200, 300, 400 mm (other dimensions on request)
- Push button control on the load break switch
- Remote control on the load break switch
- Arc-Killer SV-50
- Lateral extension
- Manometer with or without auxiliary contact
- Integrated voltage indicator of the type 'Kries Capdis S1+', 'Kries Capdis S2+', 'Horstmann type Wega 1.2C', 'Horstmann type Wega 2.2C'
- Integrated windows

Options for D function only :

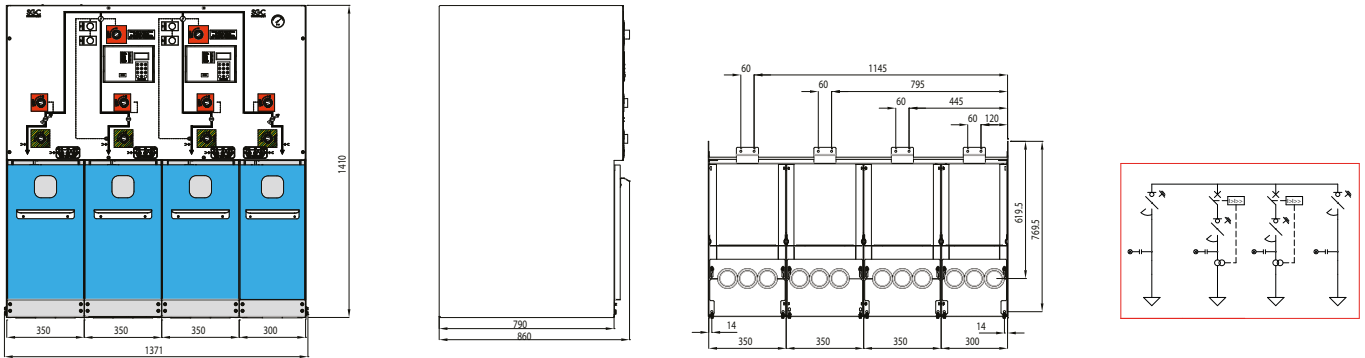
- Set of auxiliary contacts on the circuit breaker
- Push button control on the circuit breaker
- Remote control on the circuit breaker
- Automatic opening and closing by means of a control module : 24-60V DC or 110-230 V AC
- Time delayed / direct under voltage function by means of an auxiliary relay : 24-48-110 V DC or 110-230 V AC
- Protection relay specified by customer
- Test feeding for integrated protection relay (battery bloc)
- Automatic reclosing
- Integrated windows



OTHER OPTIONS & DIMENSIONS ?

Please consult us for options and dimensions other than those mentioned in this catalogue.

DT-6C 2K2D



Standard equipment for the K function :

- Three phase three position load break switch of the type RV50, class E3 according to IEC 62271-103
- Interlocked earthing switch with a making capacity up to max. 50 kÂ
- Bushing type interface C, according to DIN EN 50181
- Cable clamps for monopolar cable with section up to 240 mm²
- Door interlock
- Integrated voltage indicators of the type Mevoco HR-3
- LV compartment
- MV cable access door
- Floor panels
- Operating handle

Standard equipment for the D function :

- Three pole vacuum circuit breaker of the type ISM, class E2, M2 according to IEC 62271-100, equipped with a magnetic actuator and integrated digital protection of the type RP600
- Three phase multiple rating current transformer (50-150-200-400-600/1 // 2.5 VA – cl. 10P4-5P4-5P4-5P4-5P4), integrated in the cable compartment
- Three phase three position load break switch of the type RV50, class E3 according to IEC 62271-103
- Earthing switch with a making capacity of 50 kÂ, downstream of the circuit breaker interlocked with the load break switch
- Bushing type interface C, according to DIN EN 50181
- Cable clamps for monopolar cable with section up to 240 mm²
- Door interlock
- Integrated voltage indicators of the type Mevoco HR-3
- LV compartment
- MV cable access door
- Floor panels

SPECIFICATIONS & DIMENSIONS :

Rated Voltage	kV	12	17,5	24
Rated current	A	630	630	630
Rated short term current	kA	20	20	16
Time of the rated short time current	s	3	3	3
Width	mm	1371	1371	1371
Depth	mm	860	860	860
Height	mm	1410	1410	1410
Height between bottom and bushing (K / D)	mm	745 / 537	745 / 537	475 / 537
Weight	kg	660	660	660



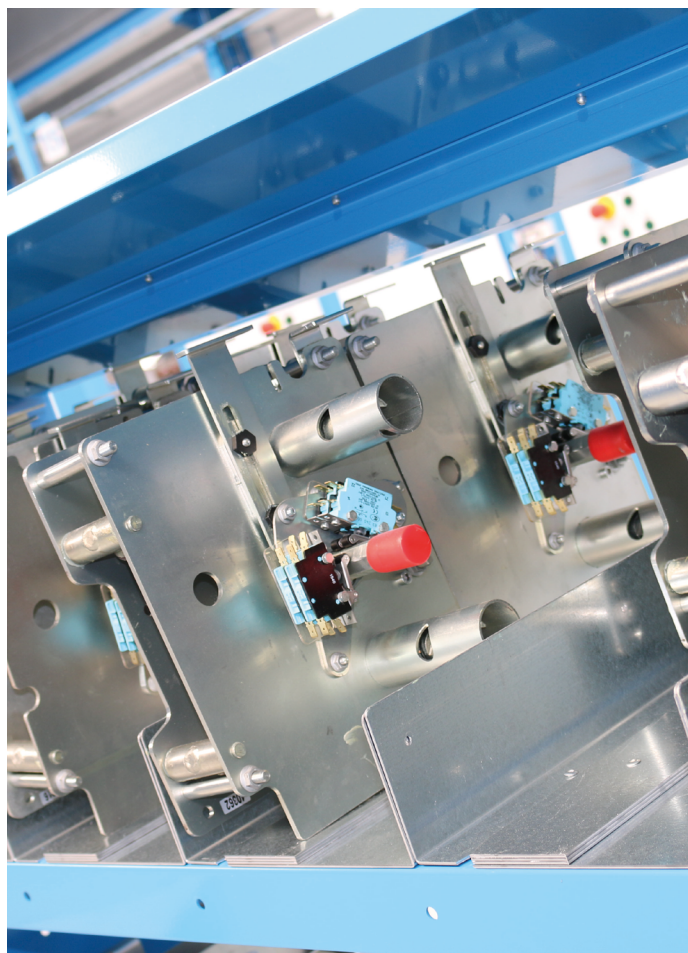


Options for K and D function :

- Set of auxiliary contacts on the load break switch
- Set of auxiliary contacts on the earthing switch
- Key interlock on the load break switch
- Key interlock on the earthing switch
- Key interlock on both load break and earthing switch
- No door interlock
- Motor operation on the load break switch : 24-48-110 V DC or 110-230 V AC
- Motor operation on the earthing switch : 24-48-110 V DC or 110-230 V AC
- Short circuit indicator (to be specified by the customer)
- Cubicle base of a height of 200, 300, 400 mm (other dimensions on request)
- Push button control on the load break switch
- Remote control on the load break switch
- Arc-Killer SV-50
- Lateral extension
- Manometer with or without auxiliary contact
- Integrated voltage indicator of the type 'Kries Capdis S1+', 'Kries Capdis S2+', 'Horstmann type Wega 1.2C', 'Horstmann type Wega 2.2C'
- Integrated windows

Options for D function only :

- Set of auxiliary contacts on the circuit breaker
- Push button control on the circuit breaker
- Remote control on the circuit breaker
- Automatic opening and closing by means of a control module : 24-60V DC or 110-230 V AC
- Time delayed / direct under voltage function by means of an auxiliary relay : 24-48-110 V DC or 110-230 V AC
- Protection relay specified by customer
- Test feeding for integrated protection relay (battery bloc)
- Automatic reclosing
- Integrated windows



OTHER OPTIONS & DIMENSIONS ?

Please consult us for options and dimensions other than those mentioned in this catalogue.

4. PRODUCTION PROCESS

The DR-6/DT-6 system is the result of a combination of modern design technologies and economical, ergonomic and environmentally friendly production processes.

It all starts in the design department where your drawings will be **customized via CAD applications**. As soon as the drawings are approved, production can start. SGC's steel plate department works with the most modern machinery, programmed by a CAD/CAM system. **The automated laser, punch and pleating section can truly be considered unique.** Two ultra-fast punch-corner cutting scissor machines are each provided with an automatic loading and sorting system which sorts and saves the items.

The numerous possibilities of the matrixes and plate feeders ensure that the RMU's can be uniformly produced as 100% user-friendly. After the laser and punch processing, several panels are bended on the fully automatic bending machine, sorted and possibly moved on to a CNC-operated welding robot. This machine welds, in a first stage, bushings onto the stainless steel enclosure. Afterwards, the various stainless steel plates which together form the gas-filled compartment are welded together.

The complete RMU enclosure has been constructed out of high-quality stainless steel, it is resistant to corrosion and **has a long life span.**

In a first stage all necessary pre-assemblies are performed, on specialized units. Through this distinction, we can devote the necessary care to a perfect alignment and correct installation of the sub-components. In the next stage the RMU's are assembled. This stage is subject to strict assembly procedures.

After assembly, all cubicles undergo an extremely thorough control. The electrical tests include resistance measurements on the RV50 load break switch and earthing switch. The cubicle is subjected to a voltage test of 50 kV / 1 min. The most striking test is the one where the closing speed of the load break switch and earthing switch is measured. One can even check the

post-vibration of the electrical points during switching on a digital screen. The mechanical tests are used to check all fitting material, and to examine the correct positions of parts and interlocks.

Right before being dispatched the RMU's will undergo a final control; this is where custom, optional features will be installed and checked separately. The cubicle is now ready for dispatch ... **to a happy and satisfied customer!**

'DR-6/DT-6 : modern technology, ergonomic & eco-friendly production process ...'



SGC offers solutions for all kinds of applications



Get impressed.
Visit our
showroom virtually.



Metal Enclosed

- Air insulated
- Always extendible
- Minimal amount of SF₆ (LBS)
- Switchgear is compartmentalized

Metal-Clad

Suitable for heavy industry and power stations

Ring Main Unit

- Gas insulated
- Compact monobloc
- Lateral extension optional

Other SF₆ free solutions

- Extendible blocs
- Switchgear is compartmentalized

INTERESTED IN OUR PRODUCTS,
PRODUCTION PROCESS OR PLANT?

Please contact our Sales Team. Send an e-mail to sales@switchgearcompany.eu for a guided tour, information on our products or visit our website www.switchgearcompany.eu



DF-2(+)

- Modular design
- Two position load break switch
- LSC 2A
- Ur:12-24kV; Ir: 630-1250A



DF-3(+)

- Compact modular design
- Three position load break switch
- LSC 2A
- Ur:12-24kV; Ir: 630A



DW-2

- AIS - SF₆ Free
- Withdrawable circuit breaker with metallic shutters
- 4 separate compartments
- LSC 2B
- Ur:12-17.5kV; Ir: 630-2000A



GI-2

- Gas insulated switchgear
- Modular
- Ur: 12/17,5/24 kV
- Ir: 630-1250-1600-2500 A



DR-6(+)/DT-6(+)

- Monobloc with cable feeder and/or switch fuse combination
- Extension with monobloc and/or individual units
- Three position load break switch
- LSC 2A
- Ur:12-24kV; Ir: 630A



DI-2

- Monobloc with cable feeder and/or switch fuse combination
- Extension with individual units
- Two position load break switch
- LSC 2A
- Ur:36kV; Ir: 400-630A



SI-2

- Modular
- Two position load break switch
- IP 68
- LSC 2A
- Ur:12-15kV; Ir: 630A



N₂ Blue

- Insulation medium: Nitrogen
- Flexible modular system
- Ur: 17,5 kV; Ir: 2500 A

N₂ Blue
NITROGEN
SF₆ FREE

“ *Our vision is to be a global player and to be the premier switchgear company in every market that we serve. Being premier does mean being the best in terms of operator safety, quality, durability, innovation, technology, delivery and profitability, resulting in long term customer satisfaction.* ”



SGC - SwitchGear Company nv
Medium voltage switchgear, built to last.

SGC - SwitchGear Company nv has been supplying reliable products for electrical distribution for more than 40 years. Innovative ideas and environmental care are the driving forces behind SGC - SwitchGear Company nv. The development of complete solutions consists of a minimum number of components, all of which have an exceptional life span. SGC- SwitchGear Company nv stands for exceptional quality and superior customer care. Your desired specifications and deadlines are our main concern.

An exclusive factory and highly automated production lines are key factors in our "state of the art" components and systems. It enables us to develop the DF-2, DR-6/DT-6, DF-3 ,DI-2, SI-2, DW-2, N₂ Blue and GI-2 to the highest quality standards. When it comes to delivery times, prices and products SGC - SwitchGear Company nv delivers.



SGC - SwitchGear Company nv

Moorstraat 24
B-9850 Landegem
Belgium
☎ +32 (0)9 321 91 12
www.switchgearcompany.eu
info@switchgearcompany.eu

Follow us:   

Get impressed.

**Visit our
showroom virtually.**



THE SPECIALIST IN MEDIUM VOLTAGE SWITCHGEAR